



Acton Lettings, 172 High Street, Acton, London W3 9NN
T 020 8752 9988 E actonlet@ludlowthompson.com W www.ludlowthompson.com

LITCHFIELD GARDENS WILLESDEN



LET

REF: 1004345

4 Bed, Period House, Private Garden, 1 Allocated Parking Space

Large Private Garden - Short walk to a tube station - Double Glazed Windows - Very Spacious - Large Separate Reception - Oak Wooden Flooring throughout

Located in a quiet residential street this house comprises of four double bedrooms, large separate lounge, a study room, a kitchen dinner, a bathroom and a very large private garden. A very spacious semi-detached house situated close to Dollis Hill Tube station (Jubilee line). Property is presented to a very high standard and is perfect for families as well as for groups of sharers. Call us on 0207 604 5100.

Train/Tube - Brondesbury Park, Willesden Green, Neasden, Dollis Hill



Acton Lettings, 172 High Street, Acton, London W3 9NN
T 020 8752 9988 E actonlet@ludlowthompson.com W www.ludlowthompson.com

LITCHFIELD GARDENS WILLESDEN



Bedroom 1



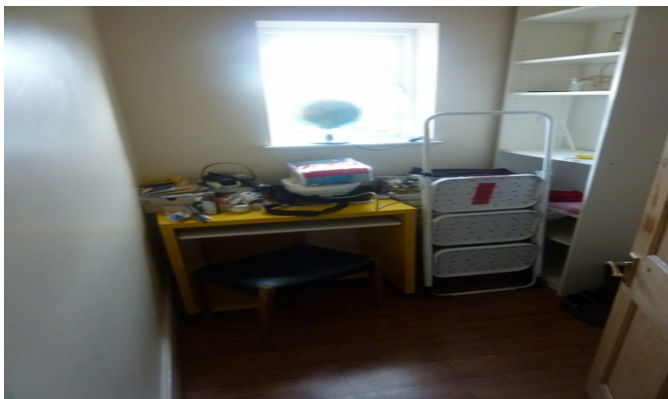
Bedroom 2



Bedroom 3



Bedroom 4



Study Room/Office



Bathroom



Acton Lettings, 172 High Street, Acton, London W3 9NN
T 020 8752 9988 E actonlet@ludlowthompson.com W www.ludlowthompson.com

LITCHFIELD GARDENS WILLESDEN



Bedroom 1

Bedroom 2

Bedroom 3

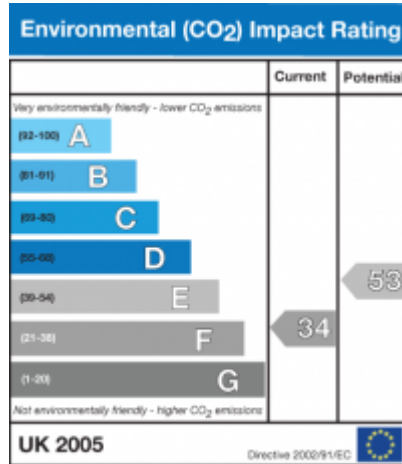
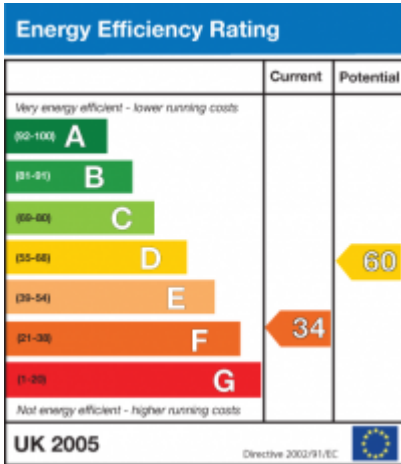
Bedroom 4

Study Room/Office

Bathroom



LITCHFIELD GARDENS WILLESDEN





Acton Lettings, 172 High Street, Acton, London W3 9NN
T 020 8752 9988 E actonlet@ludlowthompson.com W www.ludlowthompson.com

LITCHFIELD GARDENS WILLESDEN



CALL 020 8752 9988

REF: 1004345

When you want to view a property through us it helps to bear in mind the following:

Viewings are a limited opportunity and therefore should be undertaken seriously. It might be necessary to take a flexible approach in the time arrangement of viewings. Sometimes a landlord will give us specific times only convenient to them. We do advise landlords that if they are serious about letting property they should be as flexible as possible. We normally keep keys and can therefore access the property pretty much anytime.

To arrange a viewing for this property please contact our Acton Lettings Office quoting 1004345

DISCLAIMER

VIEWING: strictly by appointment through LUDLOWTHOMPSON. ludlowthompson are Agents for themselves and for the landlord.

1. These particulars do not form any part of any offer or contract.
2. Particulars are intended to give a fair description only. ludlowthompson/landlord accept no responsibility for any error they may contain however caused. Any renter must satisfy her/himself by inspection or otherwise as to their correctness.
3. ludlowthompson or employees have no authority to make or give any representation or warranty whatever regarding this property.

PLEASE NOTE BEFORE PROCEEDING

We have been unable to confirm the terms of tenure, we have relied upon information supplied by the landlord. Photographs may depict items which are not included in the let. Consult a solicitor on aspects relating to tenure/property details.