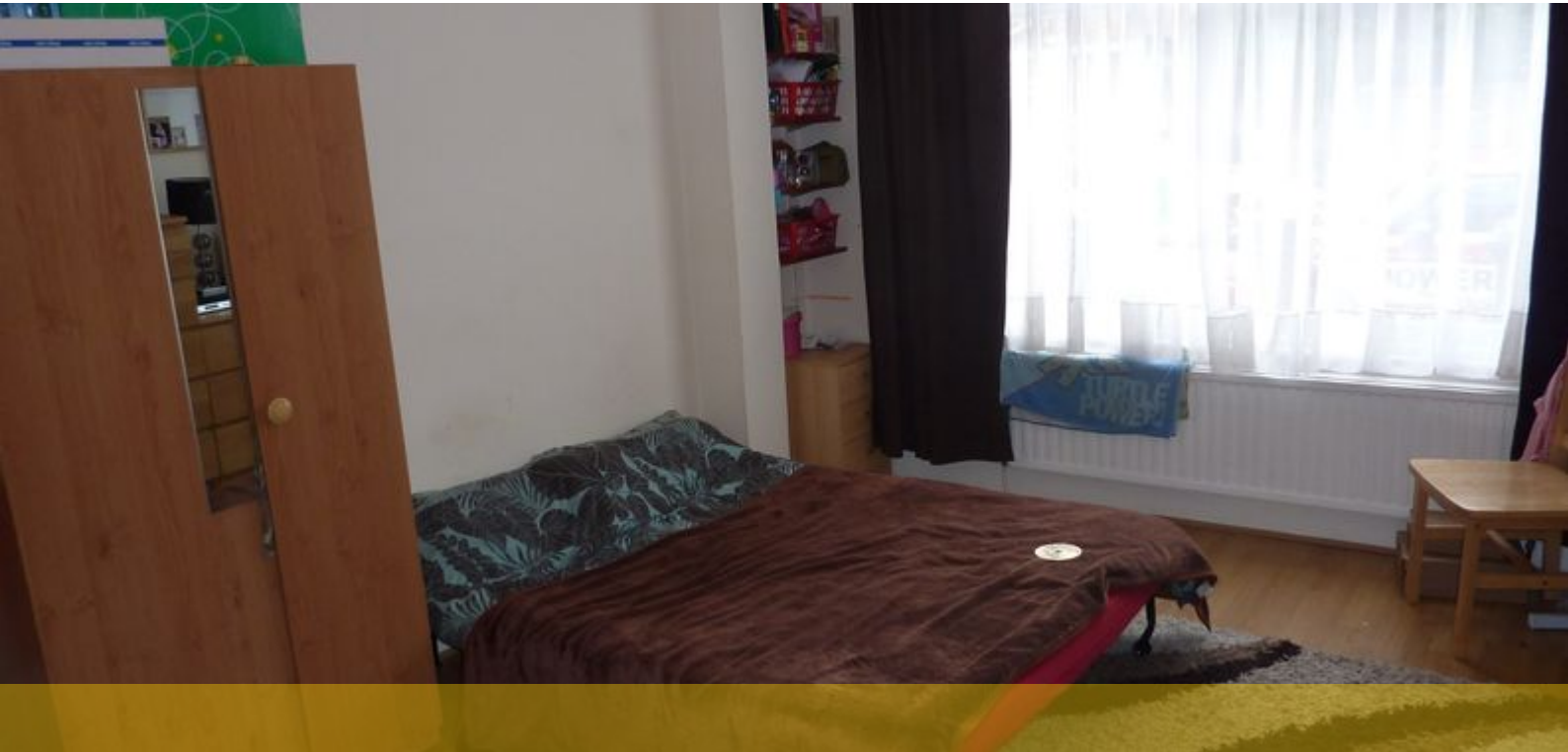




Finsbury Park Lettings, 8 Blackstock Road, London N4 2DL

T 020 7704 5777 E [finsburylet@ludlowthompson.com](mailto:finsburylet@ludlowthompson.com) W [www.ludlowthompson.com](http://www.ludlowthompson.com)

## BOUNDARY ROAD WOOD GREEN



LET

REF: 1045001

### 4 Bed, House, Private Garden

One Single Bedroom - Conservatory - Good Transport Links - Three Double Bedrooms - Private Garden - Open Plan Living Room/Kitchen

Presenting this spacious four bedroom house on Boundary Road N22. This Victorian property consists of three double bedroom, one single bedroom and spacious open plan reception/kitchen. There is a conservatory leading to a private garden. The property is located close to Turnpike Lane underground station and all shops and amenities are a short walk away. Please call 020 7704 5777 to arrange a viewing.

**Train/Tube** - Wood Green, Bruce Grove, Hornsey, Turnpike Lane



# BOUNDARY ROAD WOOD GREEN



Bedroom 1



Conservatory



Lounge



Kitchen



Garden



Bedroom Two



Finsbury Park Lettings, 8 Blackstock Road, London N4 2DL

T 020 7704 5777 E [finsburylet@ludlowthompson.com](mailto:finsburylet@ludlowthompson.com) W [www.ludlowthompson.com](http://www.ludlowthompson.com)

# BOUNDARY ROAD WOOD GREEN



Bedroom 1

Conservatory

Lounge

Kitchen

Garden

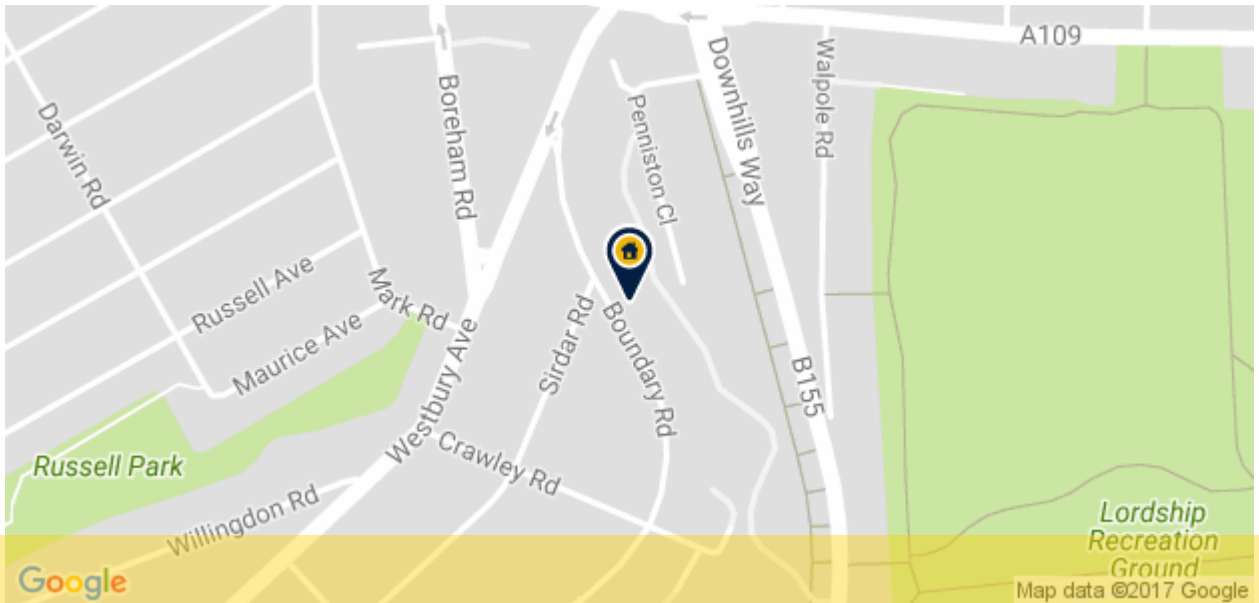
Bedroom Two



Finsbury Park Lettings, 8 Blackstock Road, London N4 2DL

T 020 7704 5777 E finsburylet@ludlowthompson.com W www.ludlowthompson.com

## BOUNDARY ROAD WOOD GREEN



CALL 020 7704 5777

REF: 1045001

### When you want to view a property through us it helps to bear in mind the following:

Viewings are a limited opportunity and therefore should be undertaken seriously. It might be necessary to take a flexible approach in the time arrangement of viewings. Sometimes a landlord will give us specific times only convenient to them. We do advise landlords that if they are serious about letting property they should be as flexible as possible. We normally keep keys and can therefore access the property pretty much anytime.

To arrange a viewing for this property please contact our Finsbury Park Lettings Office quoting 1045001

### DISCLAIMER

VIEWING: strictly by appointment through LUDLOWTHOMPSON. ludlowthompson are Agents for themselves and for the landlord.

1. These particulars do not form any part of any offer or contract.
2. Particulars are intended to give a fair description only. ludlowthompson/landlord accept no responsibility for any error they may contain however caused. Any renter must satisfy her/himself by inspection or otherwise as to their correctness.
3. ludlowthompson or employees have no authority to make or give any representation or warranty whatever regarding this property.

### PLEASE NOTE BEFORE PROCEEDING

We have been unable to confirm the terms of tenure, we have relied upon information supplied by the landlord. Photographs may depict items which are not included in the let. Consult a solicitor on aspects relating to tenure/property details.