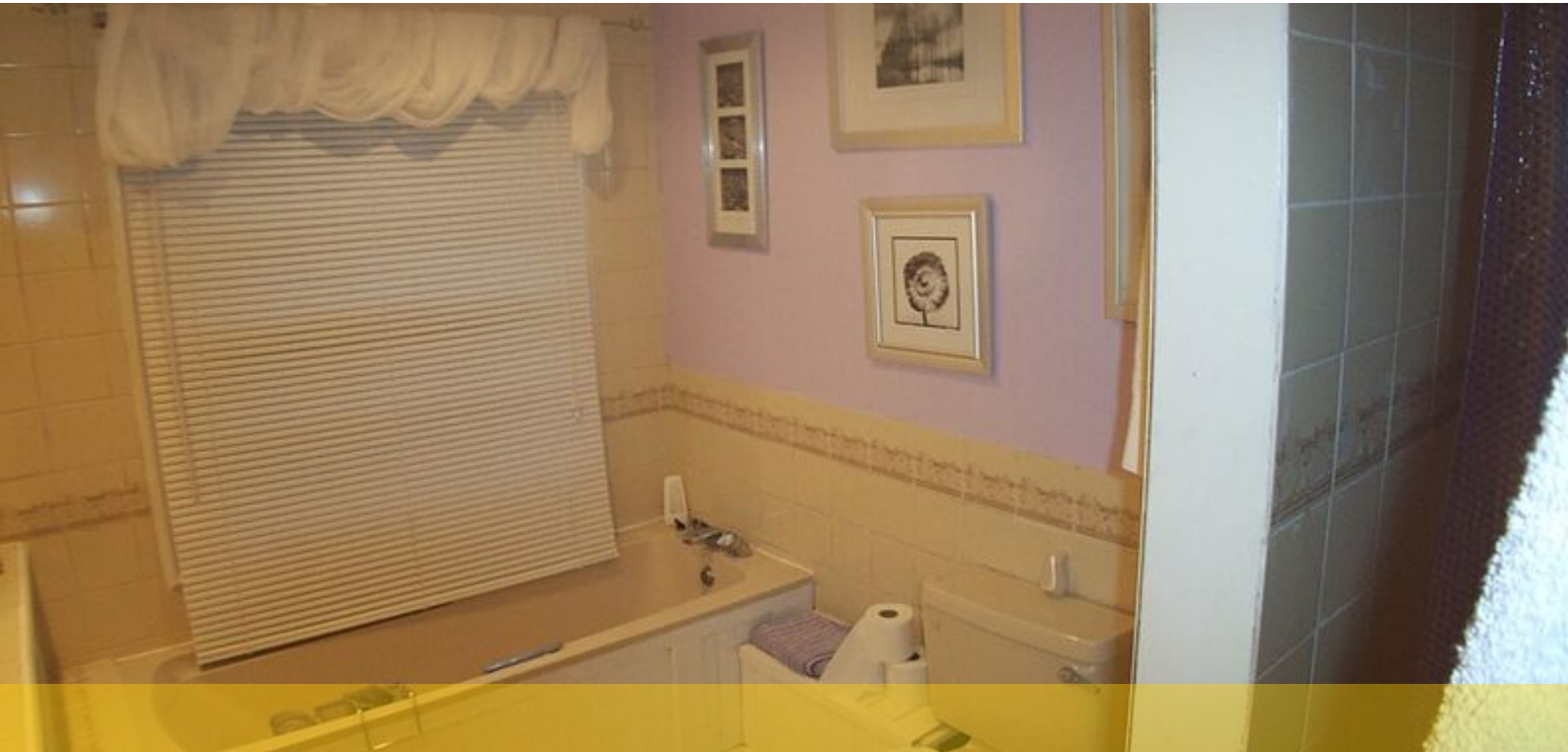




Walthamstow Lettings, 159 Hoe Street, London E17 3AL

T 020 8509 6666 E walthamstowlet@ludlowthompson.com W www.ludlowthompson.com

PERCIVAL ROAD ENFIELD



LET

REF: 183813

2 Bed, Terraced House, Private Garden

Large Bathroom - Private garden - Part Furnished - 2 Double bedrooms - Power Shower - Large reception area

A superb 2 double bedroom house, situated close to enfield town. This property has a modern and contemporary feel throughout. This is a must see and an early inspection is highly recommended. Call the lettings team on 0208 509 6666 today !

Train/Tube - Bush Hill Park, Southbury, Edmonton Green



Walthamstow Lettings, 159 Hoe Street, London E17 3AL

T 020 8509 6666 E walthamstowlet@ludlowthompson.com W www.ludlowthompson.com

PERCIVAL ROAD ENFIELD





Walthamstow Lettings, 159 Hoe Street, London E17 3AL

T 020 8509 6666 E walthamstowlet@ludlowthompson.com W www.ludlowthompson.com

PERCIVAL ROAD ENFIELD



CALL 020 8509 6666

REF: 183813

When you want to view a property through us it helps to bear in mind the following:

Viewings are a limited opportunity and therefore should be undertaken seriously. It might be necessary to take a flexible approach in the time arrangement of viewings. Sometimes a landlord will give us specific times only convenient to them. We do advise landlords that if they are serious about letting property they should be as flexible as possible. We normally keep keys and can therefore access the property pretty much anytime.

To arrange a viewing for this property please contact our Walthamstow Lettings Office quoting 183813

DISCLAIMER

VIEWING: strictly by appointment through LUDLOWTHOMPSON. ludlowthompson are Agents for themselves and for the landlord.

1. These particulars do not form any part of any offer or contract.
2. Particulars are intended to give a fair description only. ludlowthompson/landlord accept no responsibility for any error they may contain however caused. Any renter must satisfy her/himself by inspection or otherwise as to their correctness.
3. ludlowthompson or employees have no authority to make or give any representation or warranty whatever regarding this property.

PLEASE NOTE BEFORE PROCEEDING

We have been unable to confirm the terms of tenure, we have relied upon information supplied by the landlord. Photographs may depict items which are not included in the let. Consult a solicitor on aspects relating to tenure/property details.