



City / Docklands Lettings, 3-5 Dock Street, London E1 8JN
T 020 7480 0120 E docklet@ludlowthompson.com W www.ludlowthompson.com

TRINITY STREET BOROUGH



LET

REF: 2300255

2 Bed, Period Apartment, Private Garden

Spacious reception - Garden - Call us on 020 7480 0120 - Two double bedrooms - Period tree lined road - Great location for transport and amenities

A rare chance to rent this two bedroom property on one of SE1's premier tree lined roads, Trinity Street. On the lower ground floor of this gorgeous period property, the flat comprises of two double bedrooms with storage, a spacious reception room, eat-in kitchen and the family bathroom. The property has undergone some light refurbishment throughout and also benefits from direct access to the garden. Located within easy access of Borough (Northern Line, Zone 1) tube as well as the Southbank for... [continued below](#)

Train/Tube - Borough, Elephant & Castle, London Bridge, Southwark



City / Docklands Lettings, 3-5 Dock Street, London E1 8JN
T 020 7480 0120 E docklet@ludlowthompson.com W www.ludlowthompson.com

TRINITY STREET BOROUGH



Reception Room



Exterior



Bedroom One



Bedroom Two



Bathroom



Garden



City / Docklands Lettings, 3-5 Dock Street, London E1 8JN
T 020 7480 0120 E docklet@ludlowthompson.com W www.ludlowthompson.com

TRINITY STREET BOROUGH



Exterior



Reception Room (Alt.)



Kitchen (Alt.)



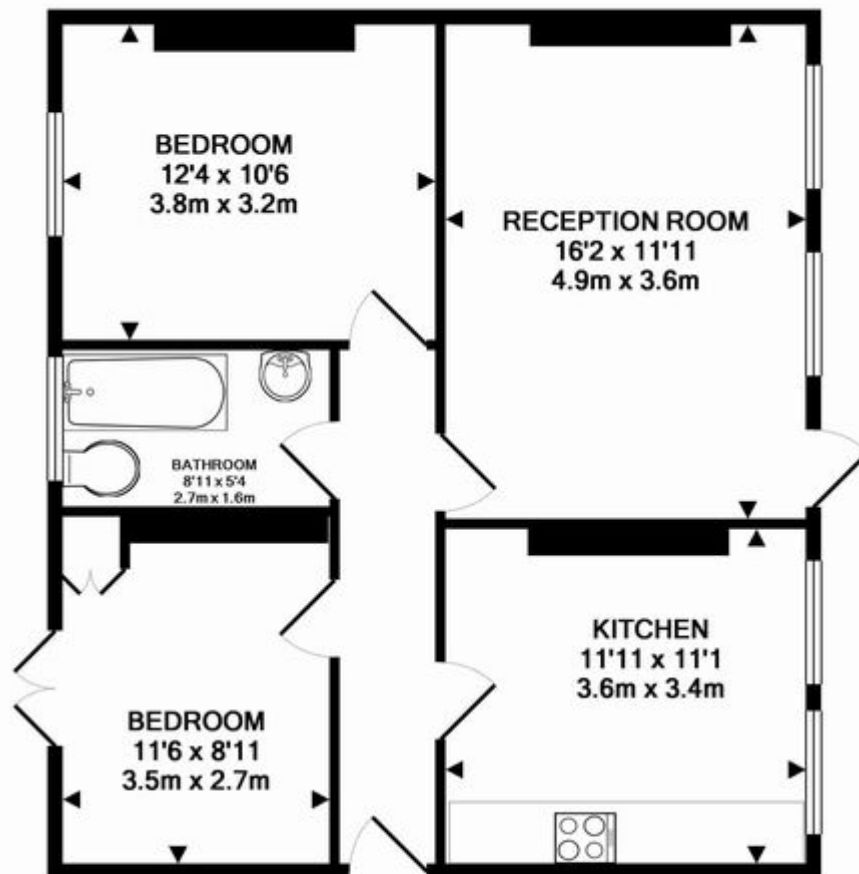
Bedroom One (Alt.)



Exterior (Alt.)



TRINITY STREET BOROUGH



TOTAL APPROX. FLOOR AREA 634 SQ.FT. (58.9 SQ.M.)

Whilst every attempt has been made to ensure the accuracy of the floor plan contained here, measurements of doors, windows, rooms and any other items are approximate and no responsibility is taken for any error, omission, or mis-statement. This plan is for illustrative purposes only and should be used as such by any prospective purchaser. The services, systems and appliances shown have not been tested and no guarantee as to their operability or efficiency can be given

Made with Metropix ©2013

Please note that this floor plan is produced for illustration and identification purposes only. It is NOT drawn to a scale. Measurements are taken in accordance with the R.I.C.S. Code of Measurement Practice. Areas quoted are Gross Internal Areas as per the R.I.C.S. Code and are not guaranteed. Do not use this plan to buy or place furniture or furnishings. Rely upon your own measurements only. Areas quoted are only a guide.



City / Docklands Lettings, 3-5 Dock Street, London E1 8JN

T 020 7480 0120 E docklet@ludlowthompson.com W www.ludlowthompson.com

TRINITY STREET BOROUGH



A rare chance to rent this two bedroom property on one of SE1's premier tree lined roads, Trinity Street. On the lower ground floor of this gorgeous period property, the flat comprises of two double bedrooms with storage, a spacious reception room, eat-in kitchen and the family bathroom. The property has undergone some light refurbishment throughout and also benefits from direct access to the garden. Located within easy access of Borough (Northern Line, Zone 1) tube as well as the Southbank for an array of bars, restaurants and regular events. Period property in this location is always popular and is sure to go quickly, so please call our expert lettings team on 020 7480 0120 to arrange your accompanied viewing appointment.

Reception Room

Exterior

Bedroom One

Bedroom Two

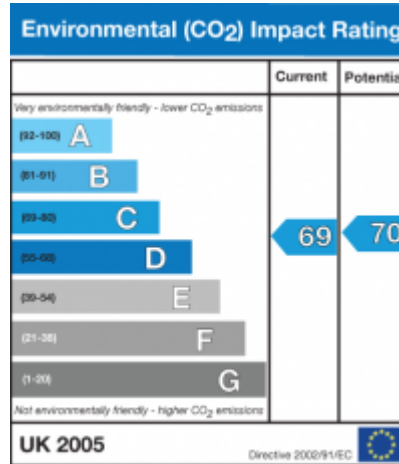
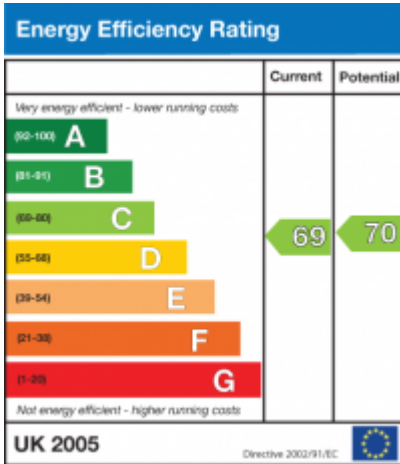
Bathroom

Garden

Exterior



TRINITY STREET BOROUGH





City / Docklands Lettings, 3-5 Dock Street, London E1 8JN

T 020 7480 0120 E docklet@ludlowthompson.com W www.ludlowthompson.com

TRINITY STREET BOROUGH



CALL 020 7480 0120

REF: 2300255

When you want to view a property through us it helps to bear in mind the following:

Viewings are a limited opportunity and therefore should be undertaken seriously. It might be necessary to take a flexible approach in the time arrangement of viewings. Sometimes a landlord will give us specific times only convenient to them. We do advise landlords that if they are serious about letting property they should be as flexible as possible. We normally keep keys and can therefore access the property pretty much anytime.

To arrange a viewing for this property please contact our City / Docklands Lettings Office quoting 2300255

DISCLAIMER

VIEWING: strictly by appointment through LUDLOWTHOMPSON. ludlowthompson are Agents for themselves and for the landlord.

1. These particulars do not form any part of any offer or contract.
2. Particulars are intended to give a fair description only. ludlowthompson/landlord accept no responsibility for any error they may contain however caused. Any renter must satisfy her/himself by inspection or otherwise as to their correctness.
3. ludlowthompson or employees have no authority to make or give any representation or warranty whatever regarding this property.

PLEASE NOTE BEFORE PROCEEDING

We have been unable to confirm the terms of tenure, we have relied upon information supplied by the landlord. Photographs may depict items which are not included in the let. Consult a solicitor on aspects relating to tenure/property details.