



Finsbury Park Sales, 8 Blackstock Road, London N4 2DL

T 020 7704 5788 E finsburysales@ludlowthompson.com W www.ludlowthompson.com

WOODSTOCK ROAD FINSBURY PARK



£595,000 FOR SALE

REF: 2645848

3 Bed, Conversion Apartment, Permit Parking

Three Double Bedrooms - Close to Local Entertainment & Amenities - Semi Open-Plan Living - Split Level Period Conversion - Chain Free - En-Suite Bathroom

A large split-level apartment on Woodstock Road, N4. Spread over 900 sq ft of internal space, the property consists of three double bedrooms, one master bathroom, one en suite and a large semi-open plan living area. Woodstock Road is a short walk to Finsbury Park station which is ideal for transport with Victoria Line, Piccadilly Line & Overground lines. Benefiting from being offered to the market chain free and within close proximity to the open spaces of Finsbury Park the property is sure to ... **continued below**

Train/Tube - Crouch Hill, Manor House, Arsenal, Finsbury Park

Local Authority/Council Tax - Haringey

Tenure - Leasehold

ludlowthompson



Finsbury Park Sales, 8 Blackstock Road, London N4 2DL

T 020 7704 5788 E finsburysales@ludlowthompson.com W www.ludlowthompson.com

WOODSTOCK ROAD FINSBURY PARK



Bedroom



Bedroom 2



Bathroom



Bedroom 3



Bathroom



Kitchen



Finsbury Park Sales, 8 Blackstock Road, London N4 2DL
T 020 7704 5788 E finsburysales@ludlowthompson.com W www.ludlowthompson.com

WOODSTOCK ROAD FINSBURY PARK



Reception



Reception



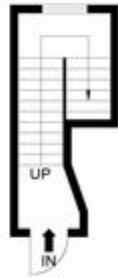
Finsbury Park Sales, 8 Blackstock Road, London N4 2DL

T 020 7704 5788 E finsburysales@ludlowthompson.com W www.ludlowthompson.com

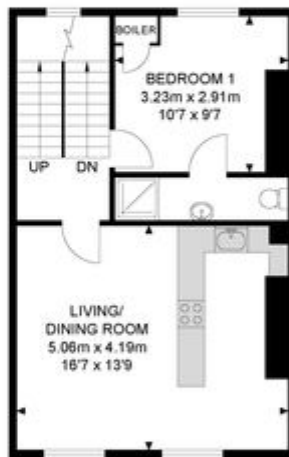
WOODSTOCK ROAD FINSBURY PARK



Woodstock Road



Ground Floor



1st Floor



2nd Floor



APPROX. GROSS INTERNAL FLOOR AREA 940.76 SQ FT / 87.40 SQM

Whilst every attempt has been made to ensure the accuracy of the floor plan contained here, measurements of doors, windows, rooms and any other items are approximated and no responsibility is taken for any error, omission or mis-statement. This plan is for illustrative purposes only and should be used as such by any prospective purchaser. The service, system and appliances shown have not been tested and no guarantee as to their operability or efficiency can be given.

© SpacePhoto

Photography and Floor Plan

Please note that this floor plan is produced for illustration and identification purposes only. It is NOT drawn to a scale. Measurements are taken in accordance with the R.I.C.S. Code of Measurement Practice. Areas quoted are Gross Internal Areas as per the R.I.C.S. Code and are not guaranteed. Do not use this plan to buy or place furniture or furnishings. Rely upon your own measurements only. Areas quoted are only a guide.



Finsbury Park Sales, 8 Blackstock Road, London N4 2DL

T 020 7704 5788 E finsburysales@ludlowthompson.com W www.ludlowthompson.com

WOODSTOCK ROAD FINSBURY PARK



A large split-level apartment on Woodstock Road, N4. Spread over 900 sq ft of internal space, the property consists of three double bedrooms, one master bathroom, one en suite and a large semi-open plan living area. Woodstock Road is a short walk to Finsbury Park station which is ideal for transport with Victoria Line, Piccadilly Line & Overground lines. Benefiting from being offered to the market chain free and within close proximity to the open spaces of Finsbury Park the property is sure to be popular. Please call a member of our sales team on 0207 704 5777 to arrange a viewing.

Tenure Details

Tenure - Leasehold

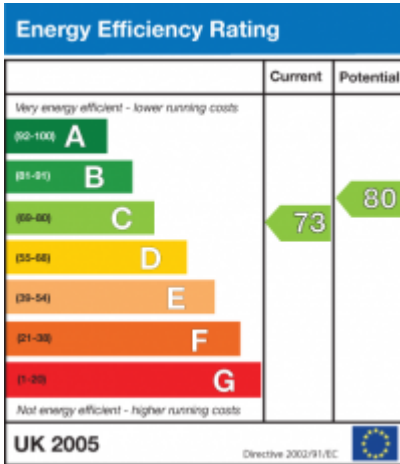
Lease Length - 125 years



Finsbury Park Sales, 8 Blackstock Road, London N4 2DL

T 020 7704 5788 E finsburysales@ludlowthompson.com W www.ludlowthompson.com

WOODSTOCK ROAD FINSBURY PARK

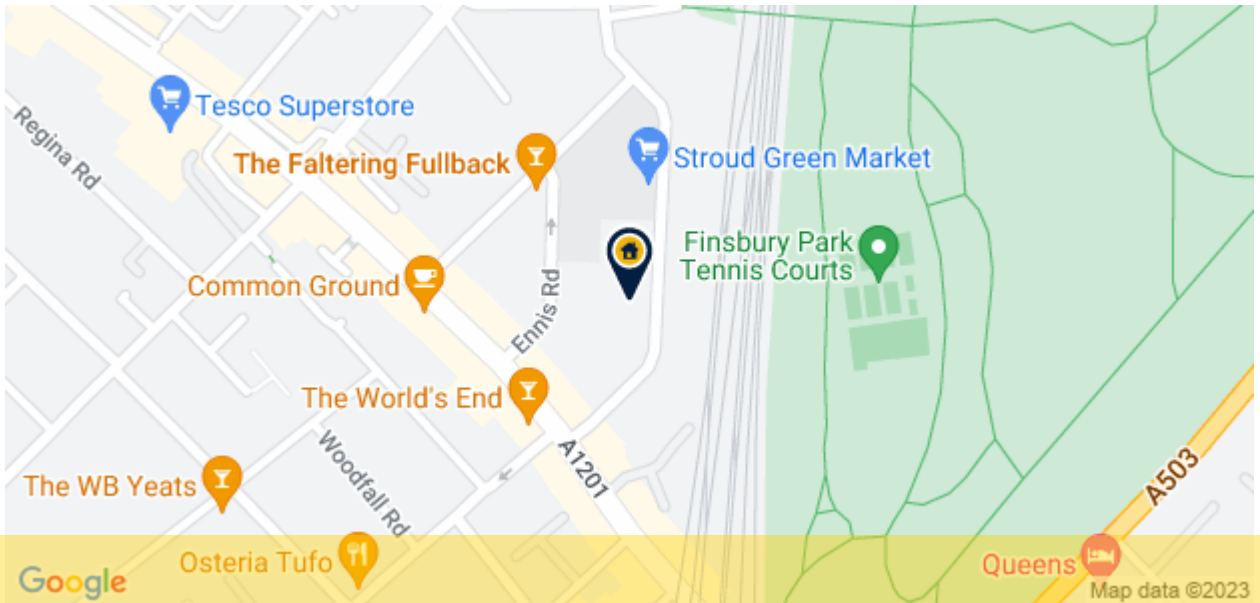




Finsbury Park Sales, 8 Blackstock Road, London N4 2DL

T 020 7704 5788 E finsburysales@ludlowthompson.com W www.ludlowthompson.com

WOODSTOCK ROAD FINSBURY PARK



CALL 020 7704 5788

REF: 2645848

When you want to view a property through us it helps to bear in mind the following:

Viewings are a limited opportunity and therefore should be undertaken seriously. It might be necessary to take a flexible approach in the time arrangement of viewings. Sometimes a vendor will give us specific times only convenient to them. We do advise vendors that if they are serious about selling property they should be as flexible as possible. We normally keep keys and can therefore access the property pretty much anytime.

To arrange a viewing for this property please contact our Finsbury Park Sales Office quoting 2645848

DISCLAIMER

VIEWING: strictly by appointment through LUDLOWTHOMPSON. ludlowthompson are Agents for themselves and for the vendor.

1. These particulars do not form any part of any offer or contract.
2. Particulars are intended to give a fair description only. ludlowthompson/vendor accept no responsibility for any error they may contain however caused. Any purchaser must satisfy her/himself by inspection or otherwise as to their correctness.
3. ludlowthompson or employees have no authority to make or give any representation or warranty whatever regarding this property.

PLEASE NOTE BEFORE PROCEEDING

We have been unable to confirm the terms of tenure, we have relied upon information supplied by the vendor. Photographs may depict items which are not included in the sale. Consult a solicitor on aspects relating to tenure/property details.