



City / Docklands Sales, 3-5 Dock Street, London E1 8JN

T 020 7480 0170 E docksales@ludlowthompson.com W www.ludlowthompson.com

COOPERS CLOSE STEPNEY GREEN



OIEO **£675,000 FOR SALE**

REF: 2858520

3 Bed, Terraced House, Private Garden, 1 Secured Parking Space

Two Bathrooms - No Chain - Private Parking - Three Bedroom House - Private Garden - Freehold

A lovely three bedroom, two bathroom house with a fenced private garden; within a 10 minute walk from Stepney Green, Bethnal Green and Whitechapel stations. It boasts three spacious bedrooms, one including an ensuite shower room; a family bathroom; a large reception with a semi open-plan fitted kitchen. The whole house gets flooded with natural light and the garden provides an ideal outdoor space for enjoying your afternoon tea. It makes a perfect family home or buy-to-let. Located moments ... [continued below](#)

Train/Tube - Stepney Green, Bethnal Green, Cambridge Heath, Shoreditch

Local Authority/Council Tax - Tower Hamlets

Tenure - Freehold

ludlowthompson



COOPERS CLOSE STEPNEY GREEN



Reception



Reception



Kitchen



Bedroom 1



Bedroom 1



Bedroom 2



COOPERS CLOSE STEPNEY GREEN



Bedroom 2



Ensuite



Bedroom 3



Bathroom



City / Docklands Sales, 3-5 Dock Street, London E1 8JN

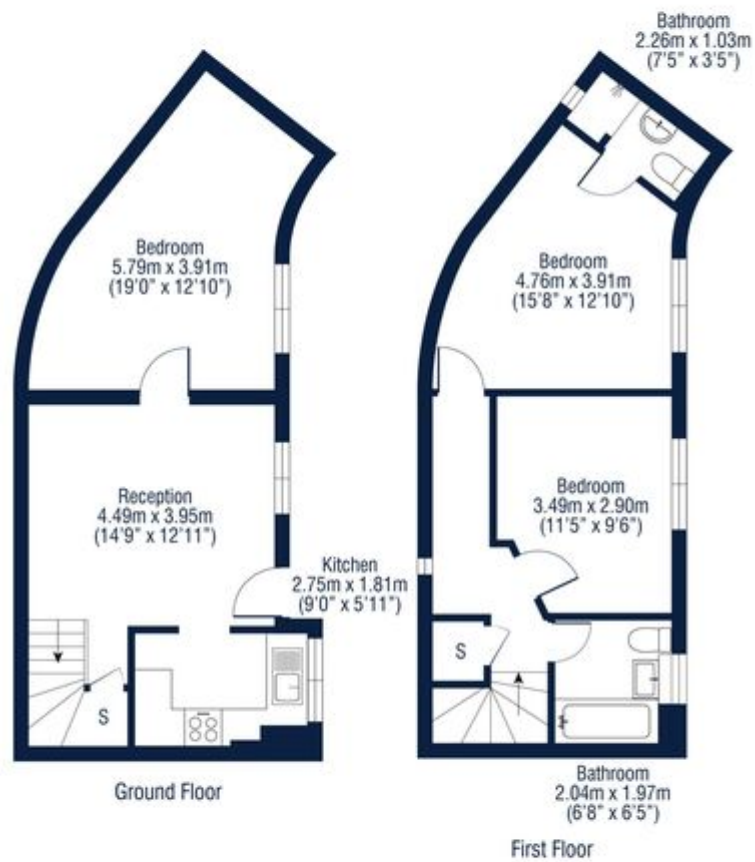
T 020 7480 0170 E docksales@ludlowthompson.com W www.ludlowthompson.com

COOPERS CLOSE STEPNEY GREEN



Coopers Close, E1

Approx. Gross Internal Area = 76.1sqm / 819.1sqft



Disclaimer: Floorplan measurements are approximate and are for illustrative purposes only. While we do not doubt the floorplan accuracy and completeness, you or your advisors should conduct a careful, independent investigation of the property in respect of monetary valuation.

Maison
VUE

Please note that this floor plan is produced for illustration and identification purposes only. It is NOT drawn to a scale. Measurements are taken in accordance with the R.I.C.S. Code of Measurement Practice. Areas quoted are Gross Internal Areas as per the R.I.C.S. Code and are not guaranteed. Do not use this plan to buy or place furniture or furnishings. Rely upon your own measurements only. Areas quoted are only a guide.



City / Docklands Sales, 3-5 Dock Street, London E1 8JN

T 020 7480 0170 E docksales@ludlowthompson.com W www.ludlowthompson.com

COOPERS CLOSE STEPNEY GREEN



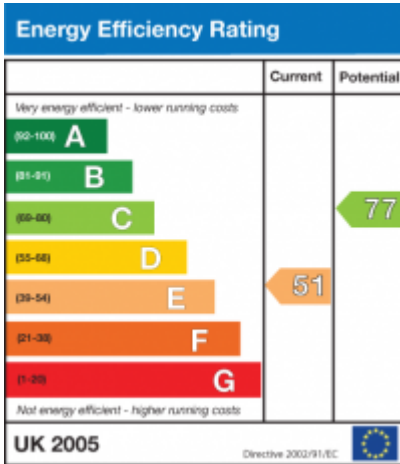
A lovely three bedroom, two bathroom house with a fenced private garden; within a 10 minute walk from Stepney Green, Bethnal Green and Whitechapel stations.

It boasts three spacious bedrooms, one including an ensuite shower room; a family bathroom; a large reception with a semi open-plan fitted kitchen. The whole house gets flooded with natural light and the garden provides an ideal outdoor space for enjoying your afternoon tea. It makes a perfect family home or buy-to-let.

Located moments from the amenities-rich Mile End Road, just a short walking distance from all you need, including bus links, tubes, various supermarkets, the infamous Whitechapel Markets, restaurants and cafes, parks and green spaces, Royal London Hospital, John Scurr Primary school and the new Town Hall! Just a short stroll to Stepney Green tube station (District line / Hammersmith & City), Whitechapel tube rail station (Elizabeth line) and Bethnal Green Overground and Underground stations (Central) so plenty of transport links for access around the City.



COOPERS CLOSE STEPNEY GREEN





City / Docklands Sales, 3-5 Dock Street, London E1 8JN

T 020 7480 0170 E docksales@ludlowthompson.com W www.ludlowthompson.com

COOPERS CLOSE STEPNEY GREEN



CALL 020 7480 0170

REF: 2858520

When you want to view a property through us it helps to bear in mind the following:

Viewings are a limited opportunity and therefore should be undertaken seriously. It might be necessary to take a flexible approach in the time arrangement of viewings. Sometimes a vendor will give us specific times only convenient to them. We do advise vendors that if they are serious about selling property they should be as flexible as possible. We normally keep keys and can therefore access the property pretty much anytime.

To arrange a viewing for this property please contact our City / Docklands Sales Office quoting 2858520

DISCLAIMER

VIEWING: strictly by appointment through LUDLOWTHOMPSON. ludlowthompson are Agents for themselves and for the vendor.

1. These particulars do not form any part of any offer or contract.
2. Particulars are intended to give a fair description only. ludlowthompson/vendor accept no responsibility for any error they may contain however caused. Any purchaser must satisfy her/himself by inspection or otherwise as to their correctness.
3. ludlowthompson or employees have no authority to make or give any representation or warranty whatever regarding this property.

PLEASE NOTE BEFORE PROCEEDING

We have been unable to confirm the terms of tenure, we have relied upon information supplied by the vendor. Photographs may depict items which are not included in the sale. Consult a solicitor on aspects relating to tenure/property details.