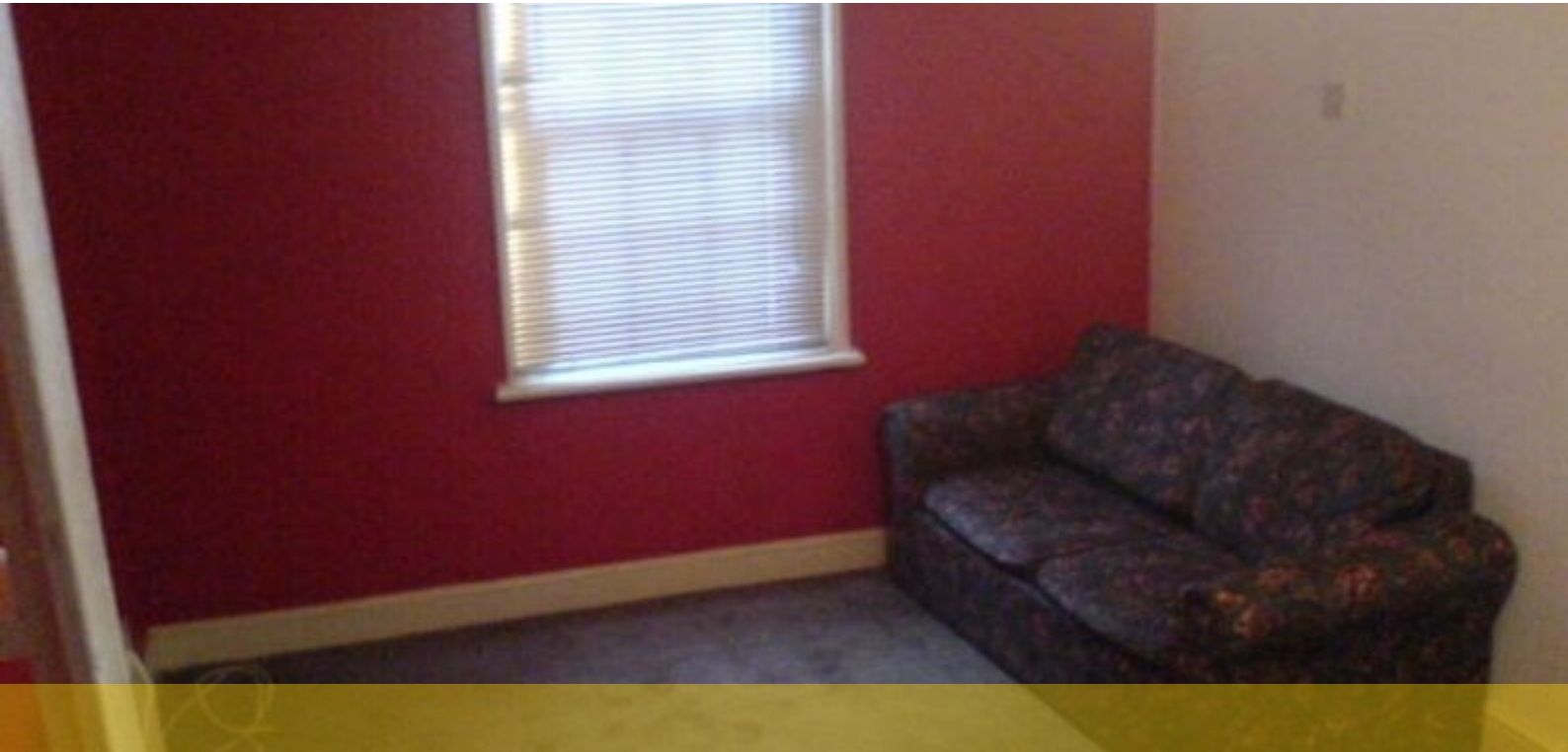




City / Docklands Lettings, 3-5 Dock Street, London E1 8JN

T 020 7480 0120 E docklet@ludlowthompson.com W www.ludlowthompson.com

CHURCHFIELD ROAD ACTON



LET

REF: 346673

Studio, Conversion Apartment

Kitchen - Well proportioned - Cheap as chips - Studio - Bathroom - Close to transport

Recently refurbished studio apartment on Churchfield Road. Comprising of a studio room with kitchen units, bathroom and a loft storage/study area. Ideally located for all the amenities of Acton High Street along with Acton Central and Acton Town stations. Call to arrange a viewing, Ludlow Thompson Lettings 0208 752 9988

Train/Tube - South Acton, Drayton Park, Acton Central, Acton Town



City / Docklands Lettings, 3-5 Dock Street, London E1 8JN
T 020 7480 0120 E docklet@ludlowthompson.com W www.ludlowthompson.com

CHURCHFIELD ROAD ACTON



Studio



Studio



City / Docklands Lettings, 3-5 Dock Street, London E1 8JN
T 020 7480 0120 E docket@ludlowthompson.com W www.ludlowthompson.com

CHURCHFIELD ROAD ACTON





City / Docklands Lettings, 3-5 Dock Street, London E1 8JN

T 020 7480 0120 E docklet@ludlowthompson.com W www.ludlowthompson.com

CHURCHFIELD ROAD ACTON



CALL 020 7480 0120

REF: 346673

When you want to view a property through us it helps to bear in mind the following:

Viewings are a limited opportunity and therefore should be undertaken seriously. It might be necessary to take a flexible approach in the time arrangement of viewings. Sometimes a landlord will give us specific times only convenient to them. We do advise landlords that if they are serious about letting property they should be as flexible as possible. We normally keep keys and can therefore access the property pretty much anytime.

To arrange a viewing for this property please contact our City / Docklands Lettings Office quoting 346673

DISCLAIMER

VIEWING: strictly by appointment through LUDLOWTHOMPSON. ludlowthompson are Agents for themselves and for the landlord.

1. These particulars do not form any part of any offer or contract.
2. Particulars are intended to give a fair description only. ludlowthompson/landlord accept no responsibility for any error they may contain however caused. Any renter must satisfy her/himself by inspection or otherwise as to their correctness.
3. ludlowthompson or employees have no authority to make or give any representation or warranty whatever regarding this property.

PLEASE NOTE BEFORE PROCEEDING

We have been unable to confirm the terms of tenure, we have relied upon information supplied by the landlord. Photographs may depict items which are not included in the let. Consult a solicitor on aspects relating to tenure/property details.