



City / Docklands Lettings, 3-5 Dock Street, London E1 8JN  
T 020 7480 0120 E docklet@ludlowthompson.com W www.ludlowthompson.com

## GUNNERSBURY LANE SOUTH ACTON



LET

REF: 442075

### Studio, Conversion Apartment, Communal Garden, 1 Garage Parking Space

Communal Gardens - Minutes from all Local Transport - Large Studio - New Build -

EXCELLENT SIZED STUDIO ALL BILLS INCLUDED EXCEPT COUNCIL TAX-Ludlow Thompson are pleased to introduce this modern studio to the lettings market. Placed directly behind a large Victorian House on Gunnersbury Lane this new build apartment conversion is constructed to the highest standard. New hardwood floor boards and recently fitted kitchen/bathroom accentuate this apartment. You will have your own entrance as well as access to a communal garden and fantastic transport links(Acton Tube Station...

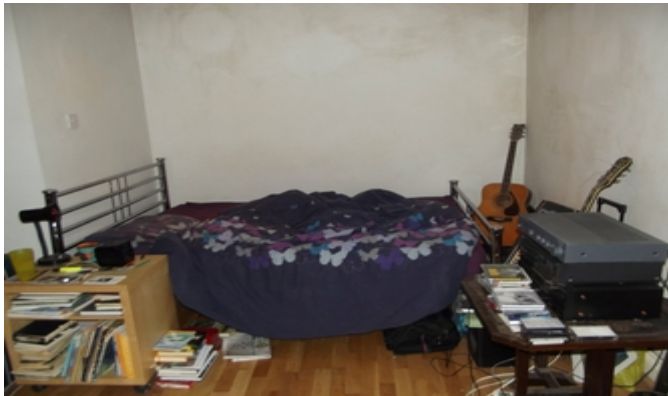
*continued below*

**Train/Tube** - Drayton Park, Ealing Common, Gunnersbury, Acton Town



City / Docklands Lettings, 3-5 Dock Street, London E1 8JN  
T 020 7480 0120 E docklet@ludlowthompson.com W www.ludlowthompson.com

# GUNNERSBURY LANE SOUTH ACTON



Bedroom



Bedroom 2



Kitchen



Toilet



City / Docklands Lettings, 3-5 Dock Street, London E1 8JN

T 020 7480 0120 E [docket@ludlowthompson.com](mailto:docket@ludlowthompson.com) W [www.ludlowthompson.com](http://www.ludlowthompson.com)

## GUNNERSBURY LANE SOUTH ACTON



EXCELLENT SIZED STUDIO ALL BILLS INCLUDED EXCEPT COUNCIL TAX-Ludlow Thompson are pleased to introduce this modern studio to the lettings market. Placed directly behind a large Victorian House on Gunnersbury Lane this new build apartment conversion is constructed to the highest standard.

New hardwood floor boards and recently fitted kitchen/bathroom accentuate this apartment. You will have your own entrance as well as access to a communal garden and fantastic transport links (Acton Tube Station minutes away).

You will also benefit from all bills included except council tax. Please call the lettings team on 02087529988 to arrange a viewing or why not book online visit [www.ludlowthompson.com/442075](http://www.ludlowthompson.com/442075)

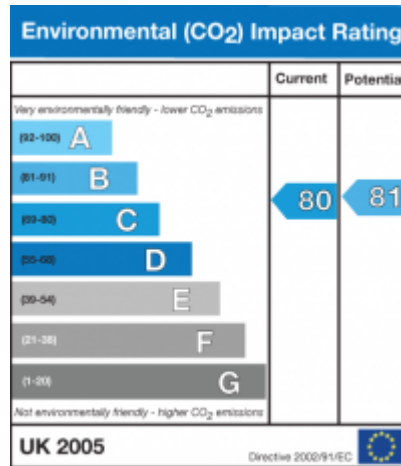
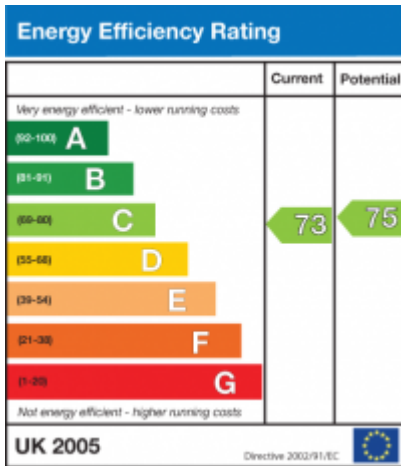
Bedroom

Bedroom 2

Kitchen



# GUNNERSBURY LANE SOUTH ACTON





City / Docklands Lettings, 3-5 Dock Street, London E1 8JN

T 020 7480 0120 E docklet@ludlowthompson.com W www.ludlowthompson.com

# GUNNERSBURY LANE SOUTH ACTON



CALL 020 7480 0120

REF: 442075

## When you want to view a property through us it helps to bear in mind the following:

Viewings are a limited opportunity and therefore should be undertaken seriously. It might be necessary to take a flexible approach in the time arrangement of viewings. Sometimes a landlord will give us specific times only convenient to them. We do advise landlords that if they are serious about letting property they should be as flexible as possible. We normally keep keys and can therefore access the property pretty much anytime.

To arrange a viewing for this property please contact our City / Docklands Lettings Office quoting 442075

## DISCLAIMER

VIEWING: strictly by appointment through LUDLOWTHOMPSON. ludlowthompson are Agents for themselves and for the landlord.

1. These particulars do not form any part of any offer or contract.
2. Particulars are intended to give a fair description only. ludlowthompson/landlord accept no responsibility for any error they may contain however caused. Any renter must satisfy her/himself by inspection or otherwise as to their correctness.
3. ludlowthompson or employees have no authority to make or give any representation or warranty whatever regarding this property.

## PLEASE NOTE BEFORE PROCEEDING

We have been unable to confirm the terms of tenure, we have relied upon information supplied by the landlord. Photographs may depict items which are not included in the let. Consult a solicitor on aspects relating to tenure/property details.