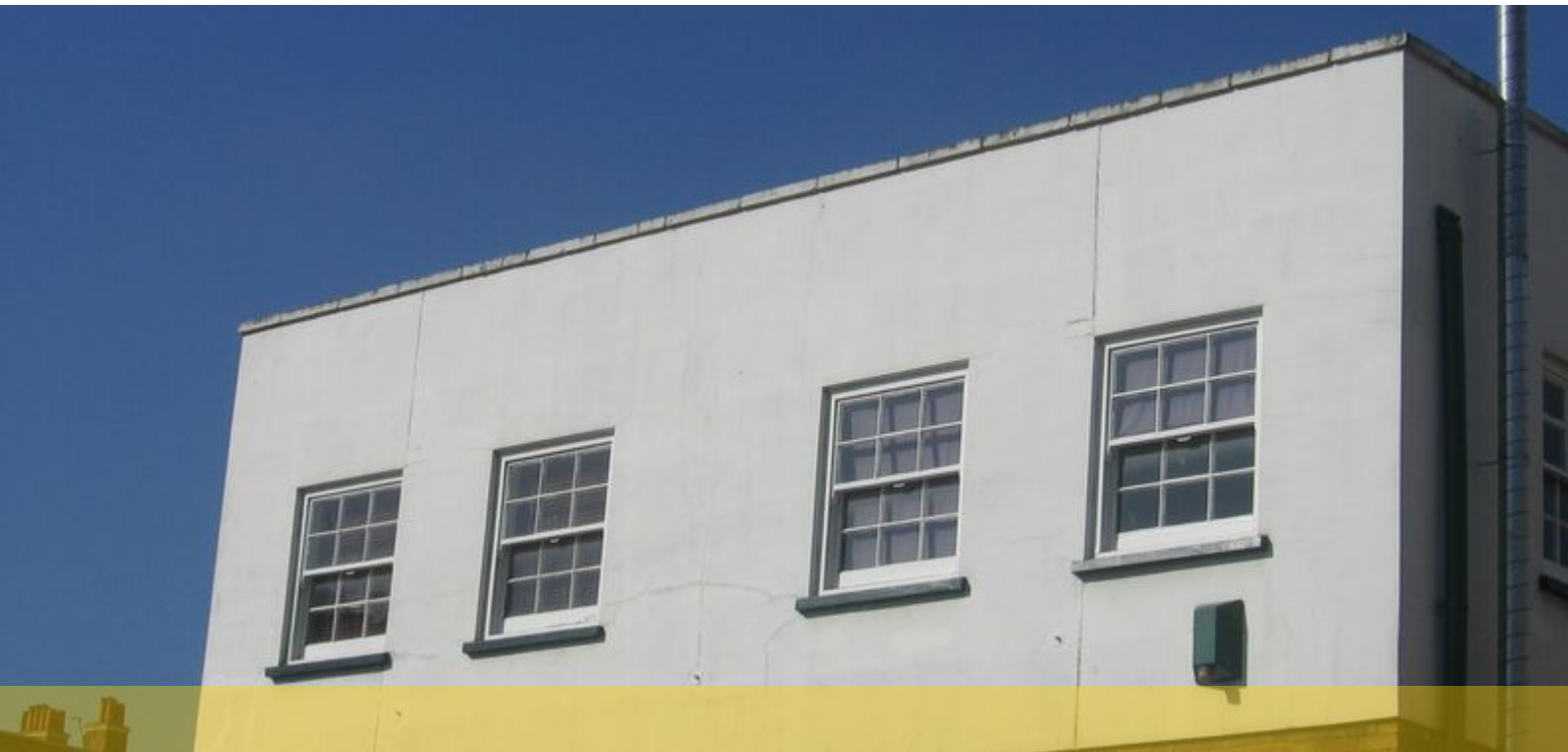




Property Management,  
E W [www.ludlowthompson.com](http://www.ludlowthompson.com)

## OLD KENT ROAD PECKHAM



LET

REF: 444797

### Studio, Purpose Built Apartment

Great Value - Good Transport Links - Available Now - Laminate Floors - Call 0208 299 8777

Ludlow Thompson is proud to present this highly accessible studio apartment to the lettings market. The Old Kent Road offers excellent transport links to the West End and City, making the property a short journey from many key locations. An affordable, well connected and cared-for property it is an ideal first flat for those wanting to move to central London. To avoid disappointment, call the lettings team now on 0208 299 8777 and book an early viewing.

**Train/Tube** - Peckham Rye, Surrey Quays, Elephant & Castle, South Bermondsey, Queens Road Peckham



# OLD KENT ROAD PECKHAM



Studio



Studio



Studio



# OLD KENT ROAD PECKHAM





# OLD KENT ROAD PECKHAM



REF: 444797

## When you want to view a property through us it helps to bear in mind the following:

Viewings are a limited opportunity and therefore should be undertaken seriously. It might be necessary to take a flexible approach in the time arrangement of viewings. Sometimes a landlord will give us specific times only convenient to them. We do advise landlords that if they are serious about letting property they should be as flexible as possible. We normally keep keys and can therefore access the property pretty much anytime.

To arrange a viewing for this property please contact our Property Management Office quoting 444797

## DISCLAIMER

VIEWING: strictly by appointment through LUDLOWTHOMPSON. ludlowthompson are Agents for themselves and for the landlord.

1. These particulars do not form any part of any offer or contract.
2. Particulars are intended to give a fair description only. ludlowthompson/landlord accept no responsibility for any error they may contain however caused. Any renter must satisfy her/himself by inspection or otherwise as to their correctness.
3. ludlowthompson or employees have no authority to make or give any representation or warranty whatever regarding this property.

## PLEASE NOTE BEFORE PROCEEDING

We have been unable to confirm the terms of tenure, we have relied upon information supplied by the landlord. Photographs may depict items which are not included in the let. Consult a solicitor on aspects relating to tenure/property details.