



Dulwich Lettings, 81-83 Lordship Lane, London SE22 8EP
T 020 8299 8777 E dulwichlet@ludlowthompson.com W www.ludlowthompson.com

HARLESCOTT ROAD PECKHAM RYE



LET

REF: 4572841

4 Bed, Conversion Apartment

Brand New Refurbishment Throughout - New Bathrooms - Four Doubles - Victorian Conversion - New Kitchen - New carpets

Period Four Double Bedroom Two Bath Split Level Apartment Boasting Recent Refurbishment Throughout. Benefitting from a no expense spared refurbishment from top to bottom. This spacious apartment briefly comprises of; a huge 16ft reception with feature fireplace, two modern bathrooms, immaculate kitchen, four double bedrooms, with the master having a Juliette balcony and skylight. The property has spotlighting throughout, and a lovely mix of brand new engineered wood flooring in the reception... [continued below](#)

Train/Tube - Crofton Park, Brockley, Honor Oak Park, Nunhead



HARLESCOTT ROAD PECKHAM RYE



Master



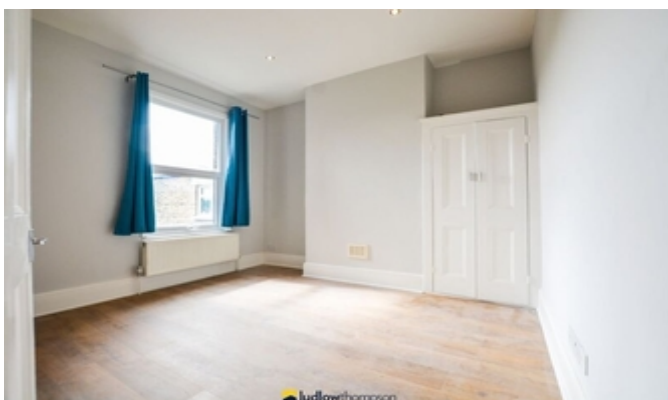
Kitchen



Bathroom



Bed 2



Bed 3



External



Dulwich Lettings, 81-83 Lordship Lane, London SE22 8EP
T 020 8299 8777 E dulwichlet@ludlowthompson.com W www.ludlowthompson.com

HARLESCOTT ROAD PECKHAM RYE



Reception alt



Kitchen alt



Bedroom



Bathroom



View from master



Dulwich Lettings, 81-83 Lordship Lane, London SE22 8EP

T 020 8299 8777 E dulwichlet@ludlowthompson.com W www.ludlowthompson.com

HARLESCOTT ROAD PECKHAM RYE



Please note that this floor plan is produced for illustration and identification purposes only. It is NOT drawn to a scale. Measurements are taken in accordance with the R.I.C.S. Code of Measurement Practice. Areas quoted are Gross Internal Areas as per the R.I.C.S. Code and are not guaranteed. Do not use this plan to buy or place furniture or furnishings. Rely upon your own measurements only. Areas quoted are only a guide.



Dulwich Lettings, 81-83 Lordship Lane, London SE22 8EP

T 020 8299 8777 E dulwichlet@ludlowthompson.com W www.ludlowthompson.com

HARLESCOTT ROAD PECKHAM RYE



Period Four Double Bedroom Two Bath Split Level Apartment Boasting Recent Refurbishment Throughout.

Benefitting from a no expense spared refurbishment from top to bottom. This spacious apartment briefly comprises of; a huge 16ft reception with feature fireplace, two modern bathrooms, immaculate kitchen, four double bedrooms, with the master having a Juliette balcony and skylight.

The property has spotlighting throughout, and a lovely mix of brand new engineered wood flooring in the reception, and brand new carpets in the bedrooms.

Located on a quiet residential street, surrounded by local history including the Victorian All Saints cemetery, and Peckham Rye Park a short walk away. Situated within easy reach of Nunhead Station, Brockley Station, and Peckham Rye Station all of which offer quick links into the city. There are also numerous bus links on the properties doorstep. To arrange a viewing please contact a member of the lettings team on 020 8299 8777



Dulwich Lettings, 81-83 Lordship Lane, London SE22 8EP

T 020 8299 8777 E dulwichlet@ludlowthompson.com W www.ludlowthompson.com

HARLESCOTT ROAD PECKHAM RYE



CALL 020 8299 8777

REF: 4572841

When you want to view a property through us it helps to bear in mind the following:

Viewings are a limited opportunity and therefore should be undertaken seriously. It might be necessary to take a flexible approach in the time arrangement of viewings. Sometimes a landlord will give us specific times only convenient to them. We do advise landlords that if they are serious about letting property they should be as flexible as possible. We normally keep keys and can therefore access the property pretty much anytime.

To arrange a viewing for this property please contact our Dulwich Lettings Office quoting 4572841

DISCLAIMER

VIEWING: strictly by appointment through LUDLOWTHOMPSON. ludlowthompson are Agents for themselves and for the landlord.

1. These particulars do not form any part of any offer or contract.
2. Particulars are intended to give a fair description only. ludlowthompson/landlord accept no responsibility for any error they may contain however caused. Any renter must satisfy her/himself by inspection or otherwise as to their correctness.
3. ludlowthompson or employees have no authority to make or give any representation or warranty whatever regarding this property.

PLEASE NOTE BEFORE PROCEEDING

We have been unable to confirm the terms of tenure, we have relied upon information supplied by the landlord. Photographs may depict items which are not included in the let. Consult a solicitor on aspects relating to tenure/property details.