



Tooting Lettings, 62 Tooting High Street, London SW17 0RN
T 020 8682 1234 E tootlet@ludlowthompson.com W www.ludlowthompson.com

RURAL WAY STREATHAM



LET

REF: 5121367

3 Bed, Detached Bungalow, Private Garden, Off Street Parking

Private Garden - Off-Street Parking - Short Walk From Tooting BR Station - Excellent Location - Perfect For Professional Sharers or Students - Quiet Residential Cul-De-Sac

Superb Bungalow With Private Garden Walking Distance From Streatham Common BR Station. The accommodation is presented in excellent condition and briefly comprises of; three double bedrooms, single bedroom / home office, family bathroom, reception/diner and large modern kitchen with direct access to a private garden. Perfect for medical students or professional sharers. Streatham Common and Tooting BR Stations are a short walk away, providing links into Central London. To view, call ludl... [continued below](#)

Train/Tube - Streatham Common, Tooting, Streatham, Mitcham Eastfields



Tooting Lettings, 62 Tooting High Street, London SW17 0RN
T 020 8682 1234 E tootlet@ludlowthompson.com W www.ludlowthompson.com

RURAL WAY STREATHAM



Reception Room



Bedroom One



Bedroom Two



Bedroom Three



Bedroom Four/Study



Bathroom



Tooting Lettings, 62 Tooting High Street, London SW17 0RN
T 020 8682 1234 E tootlet@ludlowthompson.com W www.ludlowthompson.com

RURAL WAY STREATHAM



Living Area



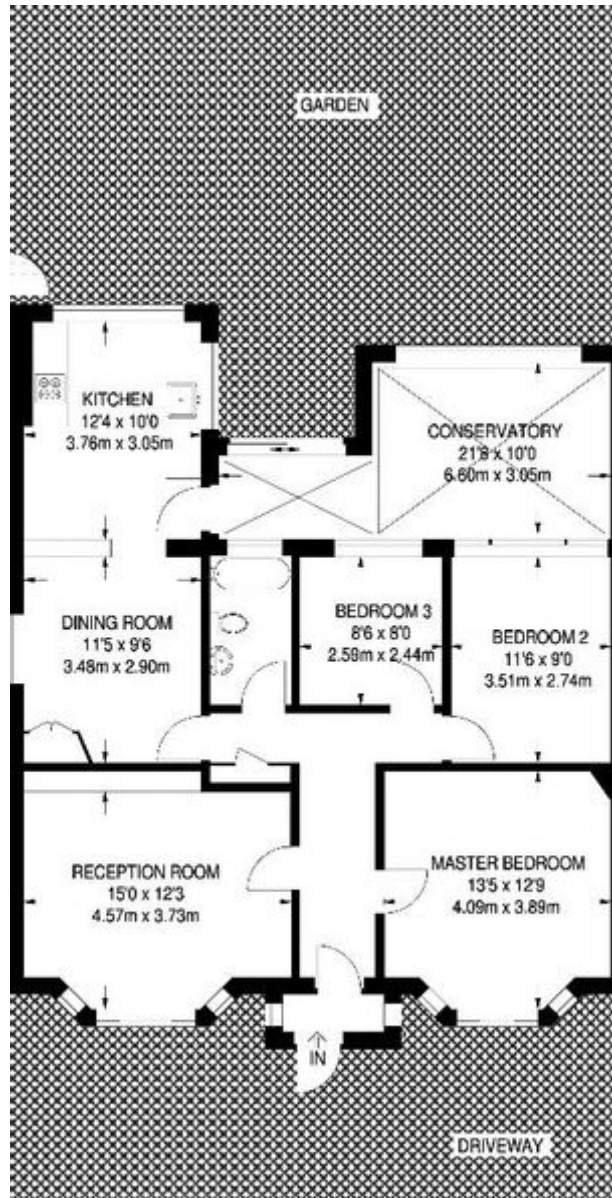
External



Garden



RURAL WAY STREATHAM



Please note that this floor plan is produced for illustration and identification purposes only. It is NOT drawn to a scale. Measurements are taken in accordance with the R.I.C.S. Code of Measurement Practice. Areas quoted are Gross Internal Areas as per the R.I.C.S. Code and are not guaranteed. Do not use this plan to buy or place furniture or furnishings. Rely upon your own measurements only. Areas quoted are only a guide.



Tooting Lettings, 62 Tooting High Street, London SW17 0RN
T 020 8682 1234 E tootlet@ludlowthompson.com W www.ludlowthompson.com

RURAL WAY STREATHAM



Superb Bungalow With Private Garden Walking Distance From Streatham Common BR Station.

The accommodation is presented in excellent condition and briefly comprises of; three double bedrooms, single bedroom / home office, family bathroom, reception/diner and large modern kitchen with direct access to a private garden.

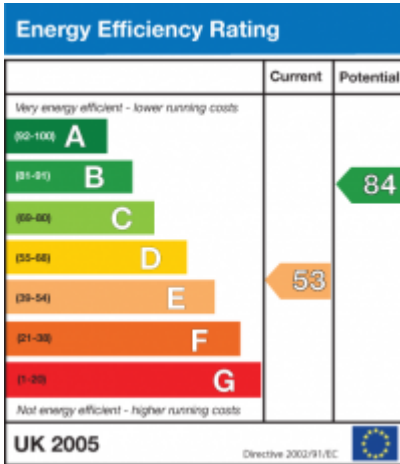
Perfect for medical students or professional sharers.

Streatham Common and Tooting BR Stations are a short walk away, providing links into Central London.

To view, call ludlowthompson on 020 8682 1234.

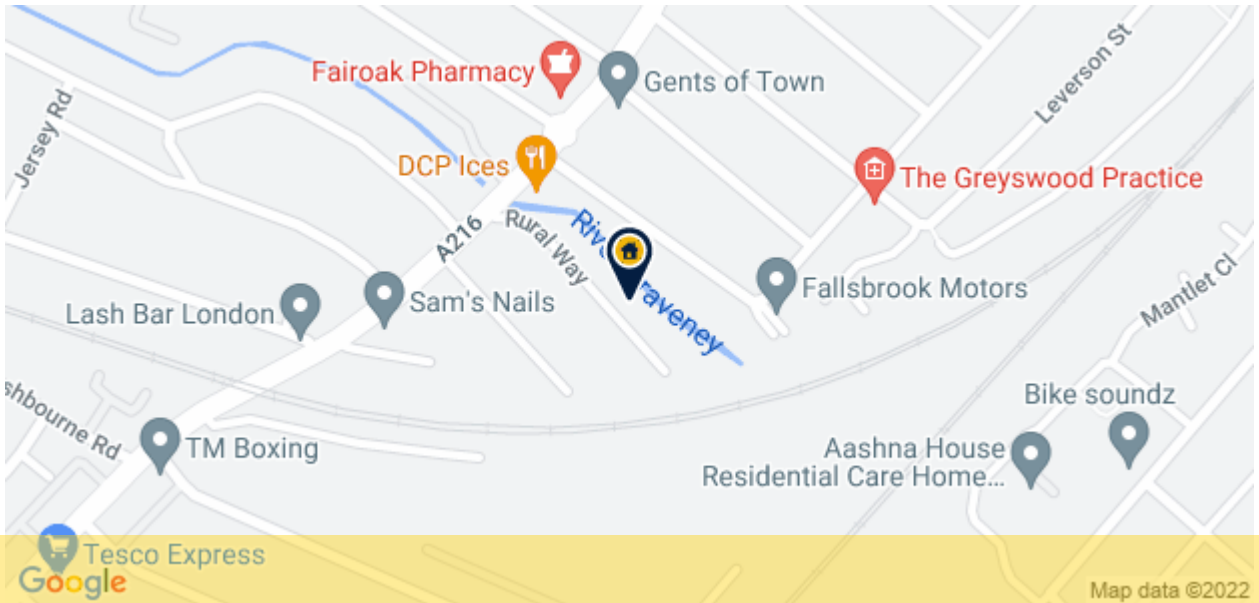


RURAL WAY STREATHAM





RURAL WAY STREATHAM



CALL 020 8682 1234

REF: 5121367

When you want to view a property through us it helps to bear in mind the following:

Viewings are a limited opportunity and therefore should be undertaken seriously. It might be necessary to take a flexible approach in the time arrangement of viewings. Sometimes a landlord will give us specific times only convenient to them. We do advise landlords that if they are serious about letting property they should be as flexible as possible. We normally keep keys and can therefore access the property pretty much anytime.

To arrange a viewing for this property please contact our Tooting Lettings Office quoting 5121367

DISCLAIMER

VIEWING: strictly by appointment through LUDLOWTHOMPSON. ludlowthompson are Agents for themselves and for the landlord.

1. These particulars do not form any part of any offer or contract.
2. Particulars are intended to give a fair description only. ludlowthompson/landlord accept no responsibility for any error they may contain however caused. Any renter must satisfy her/himself by inspection or otherwise as to their correctness.
3. ludlowthompson or employees have no authority to make or give any representation or warranty whatever regarding this property.

PLEASE NOTE BEFORE PROCEEDING

We have been unable to confirm the terms of tenure, we have relied upon information supplied by the landlord. Photographs may depict items which are not included in the let. Consult a solicitor on aspects relating to tenure/property details.