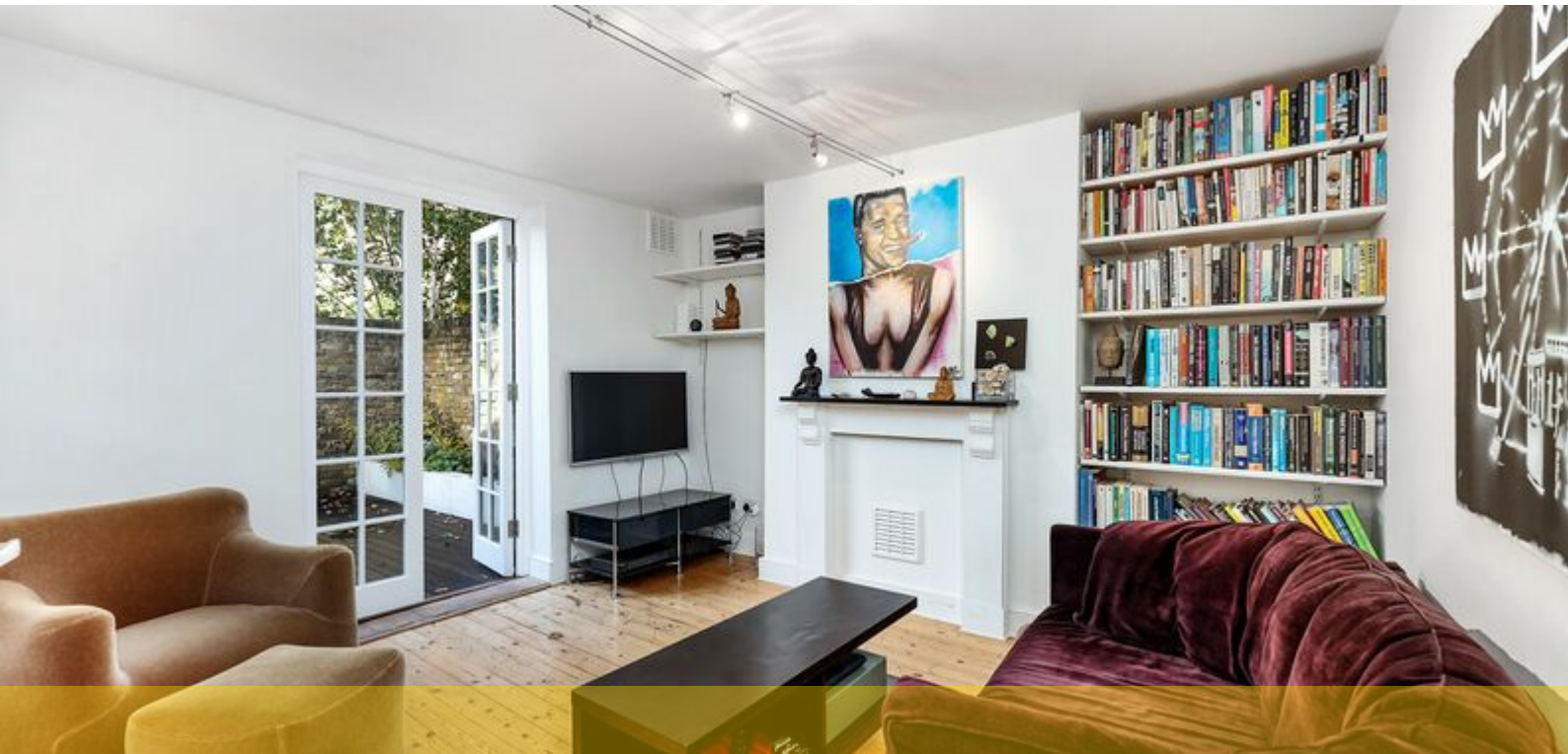




Canada Water Lettings, Unit 2 Montreal House Surrey Quays Road, London SE16 7AQ  
E [canadawaterlet@ludlowthompson.com](mailto:canadawaterlet@ludlowthompson.com) W [www.ludlowthompson.com](http://www.ludlowthompson.com)

## GREENWICH SOUTH STREET GREENWICH



LET

REF: 5201713

### 1 Bed, Period Apartment, Private Garden, Permit Parking

Private Garden - Close To Local Amenities - Bright & Airy Throughout - Lovely One-Bedroom Apartment - Modern Kitchen & Bathroom - Walking Distance To Greenwich & Deptford Stati

Lovely Victorian one bedroom apartment located on Greenwich South Street. Property comprises of a spacious living room, modern kitchen & bathroom, private garden and conveniently located minutes walk to Greenwich & Deptford Stations. The property is located a short walk from Greenwich Park and Greenwich Town Centre offering an array of local shops, restaurants, cafes and pubs for local residents to enjoy. Local points of interest include Greenwich Market, the Royal Observatory and the National ... [continued below](#)

**Train/Tube** - Greenwich, Elverson Road, Deptford Bridge, St Johns



Canada Water Lettings, Unit 2 Montreal House Surrey Quays Road, London SE16 7AQ  
E [canadawaterlet@ludlowthompson.com](mailto:canadawaterlet@ludlowthompson.com) W [www.ludlowthompson.com](http://www.ludlowthompson.com)

# GREENWICH SOUTH STREET GREENWICH



Kitchen



Living Room 2



Bedroom 2



Bedroom 1



Bathroom



Living Room 3



Canada Water Lettings, Unit 2 Montreal House Surrey Quays Road, London SE16 7AQ  
E [canadawaterlet@ludlowthompson.com](mailto:canadawaterlet@ludlowthompson.com) W [www.ludlowthompson.com](http://www.ludlowthompson.com)

# GREENWICH SOUTH STREET GREENWICH



Garden 1



Garden 2



Garden 3



Exterior 1



Exterior 2

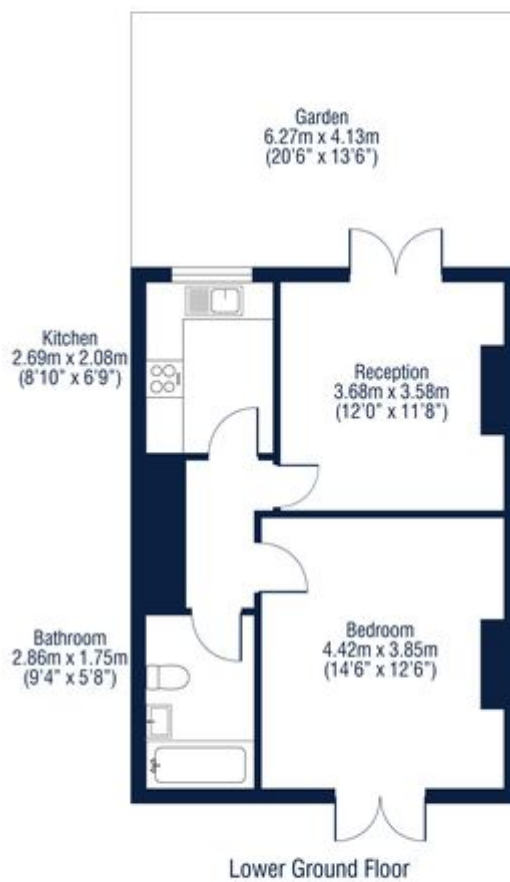


# GREENWICH SOUTH STREET GREENWICH



## Greenwich South Street, SE10

Approx. Gross Internal Area = 43.7sqm / 470.4sqft



Disclaimer: Floorplan measurements are approximate and are for illustrative purposes only. While we do not doubt the floorplan accuracy and completeness, you or your advisors should conduct a careful, independent investigation of the property in respect of monetary valuation.



Please note that this floor plan is produced for illustration and identification purposes only. It is NOT drawn to a scale. Measurements are taken in accordance with the R.I.C.S. Code of Measurement Practice. Areas quoted are Gross Internal Areas as per the R.I.C.S. Code and are not guaranteed. Do not use this plan to buy or place furniture or furnishings. Rely upon your own measurements only. Areas quoted are only a guide.



Canada Water Lettings, Unit 2 Montreal House Surrey Quays Road, London SE16 7AQ  
E [canadawaterlet@ludlowthompson.com](mailto:canadawaterlet@ludlowthompson.com) W [www.ludlowthompson.com](http://www.ludlowthompson.com)

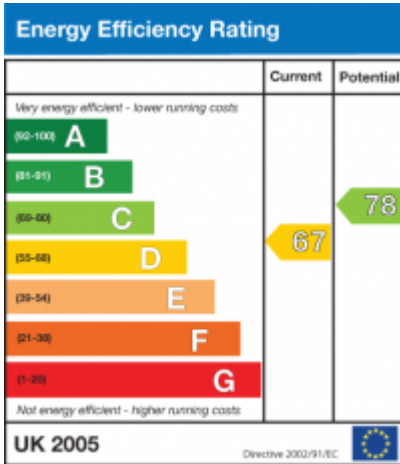
## GREENWICH SOUTH STREET GREENWICH



Lovely Victorian one bedroom apartment located on Greenwich South Street. Property comprises of a spacious living room, modern kitchen & bathroom, private garden and conveniently located minutes walk to Greenwich & Deptford Stations. The property is located a short walk from Greenwich Park and Greenwich Town Centre offering an array of local shops, restaurants, cafes and pubs for local residents to enjoy. Local points of interest include Greenwich Market, the Royal Observatory and the National Maritime Museum all of which are located a short walk away. The Cutty Sark DLR Station is located moments away for a swift commute to Canary Wharf while Greenwich Mainline Station offers direct connections to London Bridge, Cannon Street, Blackfriars and Kings Cross. To schedule a viewing please call our lettings team on 02071010235.



# GREENWICH SOUTH STREET GREENWICH





# GREENWICH SOUTH STREET GREENWICH



REF: 5201713

## When you want to view a property through us it helps to bear in mind the following:

Viewings are a limited opportunity and therefore should be undertaken seriously. It might be necessary to take a flexible approach in the time arrangement of viewings. Sometimes a landlord will give us specific times only convenient to them. We do advise landlords that if they are serious about letting property they should be as flexible as possible. We normally keep keys and can therefore access the property pretty much anytime.

To arrange a viewing for this property please contact our Canada Water Lettings Office quoting 5201713

## DISCLAIMER

VIEWING: strictly by appointment through LUDLOWTHOMPSON. ludlowthompson are Agents for themselves and for the landlord.

1. These particulars do not form any part of any offer or contract.
2. Particulars are intended to give a fair description only. ludlowthompson/landlord accept no responsibility for any error they may contain however caused. Any renter must satisfy her/himself by inspection or otherwise as to their correctness.
3. ludlowthompson or employees have no authority to make or give any representation or warranty whatever regarding this property.

## PLEASE NOTE BEFORE PROCEEDING

We have been unable to confirm the terms of tenure, we have relied upon information supplied by the landlord. Photographs may depict items which are not included in the let. Consult a solicitor on aspects relating to tenure/property details.