



Docklands Lettings, 3-5 Dock Street, London E1 8JN

T 020 7480 0120 E docklet@ludlowthompson.com W www.ludlowthompson.com

COKE STREET ALDGATE



LET

REF: 5208935

2 Bed, Complex Apartment, Shared Terrace

Amazing Location - Gym & Spa Facilities - 24 Hour Concierge - Finished To A High Standard - Secure Gated Development

24hr concierge, gym and sauna. Large apartment boasting: two double bedrooms, family bathroom, modern fitted kitchen and separate reception room with Juliette balcony. This property has been finished to a very high standard. Additional benefits include - copious amounts of natural light, wooden flooring throughout and secure electronic entry system. Perfect for professional sharers. Aldgate East Underground Station is only a short walk away, with excellent connections to the City and Canary Wha... [continued below](#)

Train/Tube - Aldgate East, Aldgate, Whitechapel, Tower Gateway

ludlowthompson



COKE STREET ALDGATE



First bedroom



First bedroom



Second bedroom



Second bedroom



Bathroom



Kitchen



Docklands Lettings, 3-5 Dock Street, London E1 8JN
T 020 7480 0120 E docklet@ludlowthompson.com W www.ludlowthompson.com

COKE STREET ALDGATE



Reception



Reception



Views



Gym



Exterior



Docklands Lettings, 3-5 Dock Street, London E1 8JN

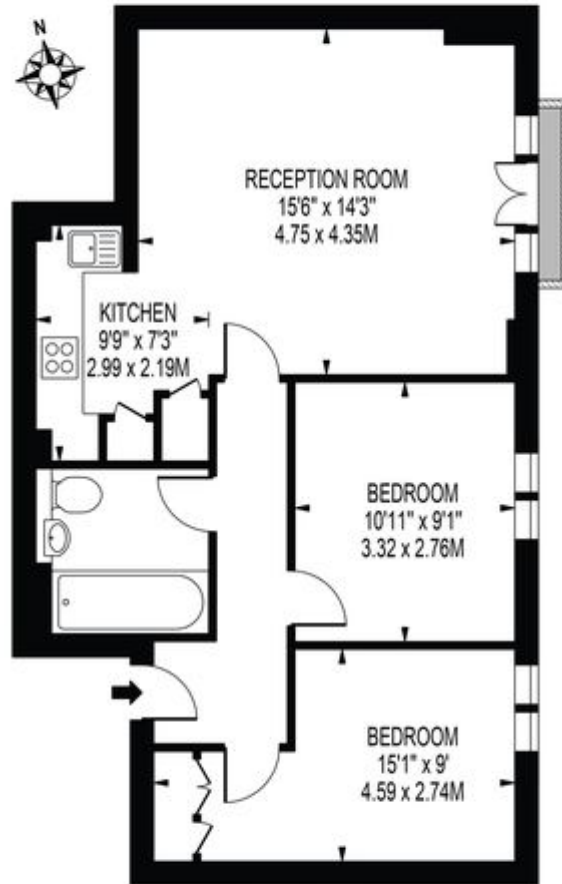
T 020 7480 0120 E docklet@ludlowthompson.com W www.ludlowthompson.com

COKE STREET ALDGATE



CORNELL BUILDING

APPROXIMATE GROSS INTERNAL FLOOR AREA: 606 SQ FT - 56.30 SQ M



THIRD FLOOR

FOR ILLUSTRATION PURPOSES ONLY

THIS FLOOR PLAN SHOULD BE USED AS A GENERAL OUTLINE FOR GUIDANCE ONLY AND DOES NOT CONSTITUTE IN WHOLE OR IN PART AN OFFER OR CONTRACT. ANY INTENDING PURCHASER OR LESSEE SHOULD SATISFY THEMSELVES BY INSPECTION, SEARCHES, ENQUIRIES AND FULL SURVEY AS TO THE CORRECTNESS OF EACH STATEMENT. ANY AREAS, MEASUREMENTS OR DISTANCES QUOTED ARE APPROXIMATE AND SHOULD NOT BE USED TO VALUE A PROPERTY OR BE THE BASIS OF ANY SALE OR LET.

Please note that this floor plan is produced for illustration and identification purposes only. It is NOT drawn to a scale. Measurements are taken in accordance with the R.I.C.S. Code of Measurement Practice. Areas quoted are Gross Internal Areas as per the R.I.C.S. Code and are not guaranteed. Do not use this plan to buy or place furniture or furnishings. Rely upon your own measurements only. Areas quoted are only a guide.



Docklands Lettings, 3-5 Dock Street, London E1 8JN

T 020 7480 0120 E docket@ludlowthompson.com W www.ludlowthompson.com

COKE STREET ALDGATE



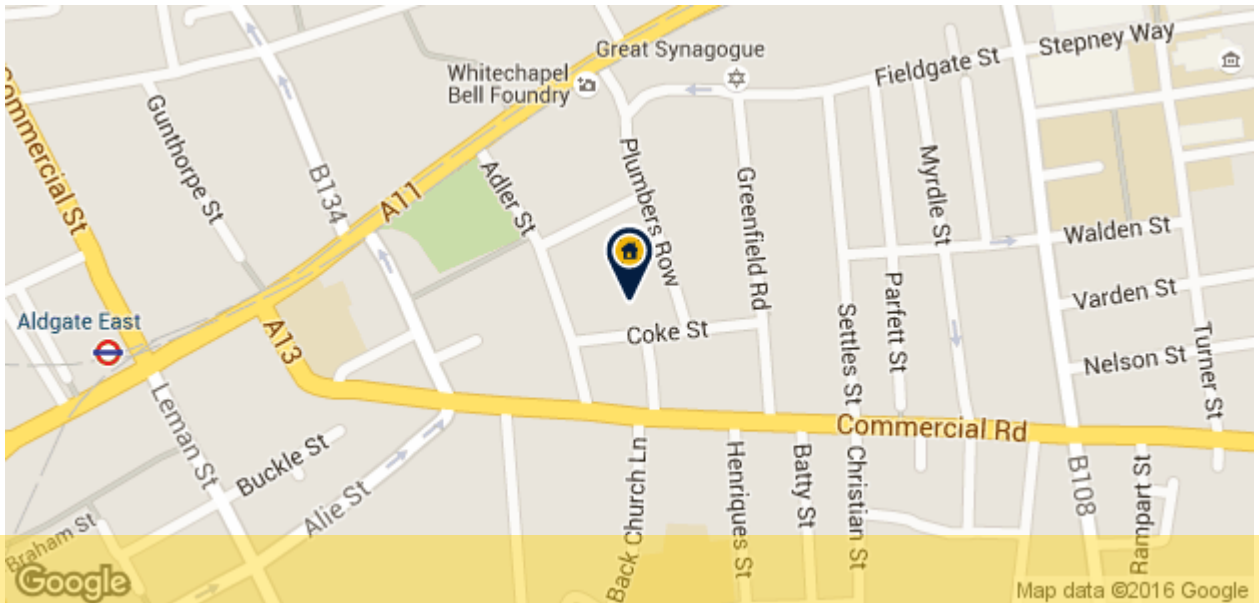
24hr concierge, gym and sauna. Large apartment boasting; two double bedrooms, family bathroom, modern fitted kitchen and separate reception room with Juliette balcony. This property has been finished to a very high standard. Additional benefits include - copious amounts of natural light, wooden flooring throughout and secure electronic entry system. Perfect for professional sharers. Aldgate East Underground Station is only a short walk away, with excellent connections to the City and Canary Wharf.



Docklands Lettings, 3-5 Dock Street, London E1 8JN

T 020 7480 0120 E docklet@ludlowthompson.com W www.ludlowthompson.com

COKE STREET ALDGATE



CALL 020 7480 0120

REF: 5208935

When you want to view a property through us it helps to bear in mind the following:

Viewings are a limited opportunity and therefore should be undertaken seriously. It might be necessary to take a flexible approach in the time arrangement of viewings. Sometimes a landlord will give us specific times only convenient to them. We do advise landlords that if they are serious about letting property they should be as flexible as possible. We normally keep keys and can therefore access the property pretty much anytime.

To arrange a viewing for this property please contact our Docklands Lettings Office quoting 5208935

DISCLAIMER

VIEWING: strictly by appointment through LUDLOWTHOMPSON. ludlowthompson are Agents for themselves and for the landlord.

1. These particulars do not form any part of any offer or contract.
2. Particulars are intended to give a fair description only. ludlowthompson/landlord accept no responsibility for any error they may contain however caused. Any renter must satisfy her/himself by inspection or otherwise as to their correctness.
3. ludlowthompson or employees have no authority to make or give any representation or warranty whatever regarding this property.

PLEASE NOTE BEFORE PROCEEDING

We have been unable to confirm the terms of tenure, we have relied upon information supplied by the landlord. Photographs may depict items which are not included in the let. Consult a solicitor on aspects relating to tenure/property details.