



City / Docklands Lettings, 3-5 Dock Street, London E1 8JN
T 020 7480 0120 E docklet@ludlowthompson.com W www.ludlowthompson.com

LEATHER LANE FARRINGTON



LET

REF: 5892765

1 Bed, Complex Apartment, Communal Garden

Large Mezzanine Storage - High Ceilings - Close to Chancery Lane Station - Bike Storage - Gated Development

Amazing new one double bedroom fully furnished apartment close to Chancery Lane and Farringdon tube station. The property has access to a large mezzanine storage area, a spacious reception area, fully fitted kitchen and a tiled bathroom with shower above bath Bedroom with fitted wardrobes and wood flooring, Stylish reception diner with high ceilings and solid wood flooring. The building also includes a lift service and bike storage. Leather lane market which is just a few minutes away and flood... [continued below](#)

Train/Tube - Chancery Lane, Farringdon, City Thameslink, Barbican



City / Docklands Lettings, 3-5 Dock Street, London E1 8JN
T 020 7480 0120 E docklet@ludlowthompson.com W www.ludlowthompson.com

LEATHER LANE FARRINGTON



Kitchen



Living room 1



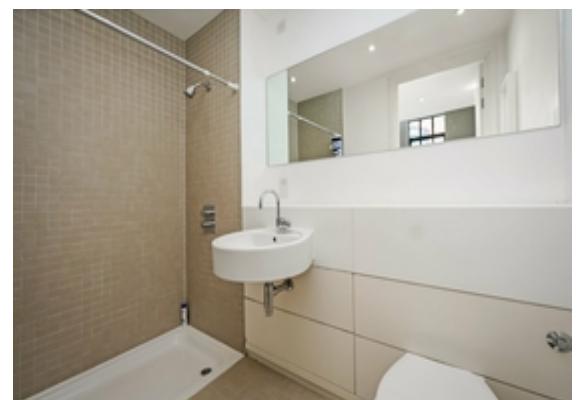
Living room 1



Bedroom



Bedroom



Bathroom



City / Docklands Lettings, 3-5 Dock Street, London E1 8JN
T 020 7480 0120 E docklet@ludlowthompson.com W www.ludlowthompson.com

LEATHER LANE FARRINGTON



Storage



Storage



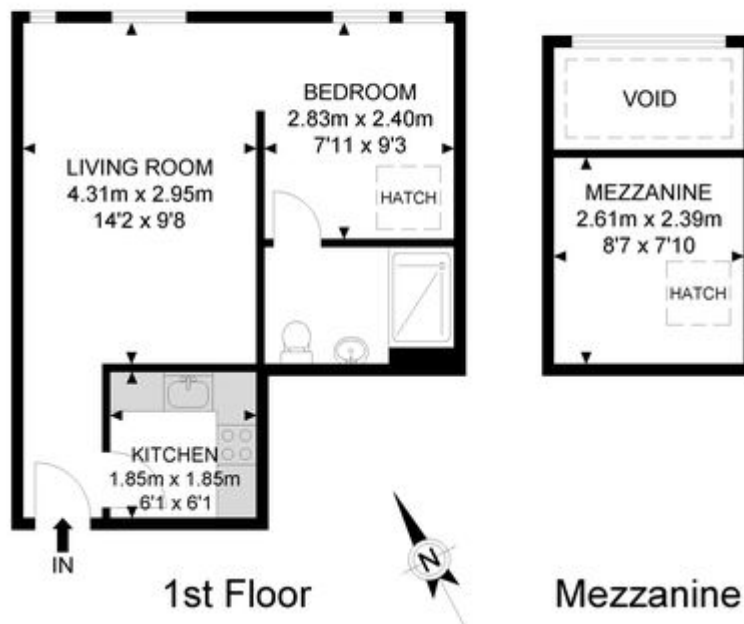
City / Docklands Lettings, 3-5 Dock Street, London E1 8JN

T 020 7480 0120 E docklet@ludlowthompson.com W www.ludlowthompson.com

LEATHER LANE FARRINGDON



Sweeps Building



APPROX. GROSS INTERNAL FLOOR AREA 382.11 SQ FT / 35.50 SQM

Whilst every attempt has been made to ensure the accuracy of the floor plan contained here, measurements of doors, windows, rooms and any other items are approximated and no responsibility is taken for any error, omission or mis-statement. This plan is for illustrative purposes only and should be used as such by any prospective purchaser. The service, system and appliances shown have not been tested and no guarantee as to their operability or efficiency can be given.

© SpacePhoto

Photography and Floor Plan

Please note that this floor plan is produced for illustration and identification purposes only. It is NOT drawn to a scale. Measurements are taken in accordance with the R.I.C.S. Code of Measurement Practice. Areas quoted are Gross Internal Areas as per the R.I.C.S. Code and are not guaranteed. Do not use this plan to buy or place furniture or furnishings. Rely upon your own measurements only. Areas quoted are only a guide.



City / Docklands Lettings, 3-5 Dock Street, London E1 8JN

T 020 7480 0120 E docket@ludlowthompson.com W www.ludlowthompson.com

LEATHER LANE FARRINGDON



Amazing new one double bedroom fully furnished apartment close to Chancery Lane and Farringdon tube station. The property has access to a large mezzanine storage area, a spacious reception area, fully fitted kitchen and a tiled bathroom with shower above bath Bedroom with fitted wardrobes and wood flooring, Stylish reception diner with high ceilings and solid wood flooring. The building also includes a lift service and bike storage. Leather lane market which is just a few minutes away and flooded with restaurants, pubs and local stores

Kitchen

Living room 1

Living room 1

Bedroom

Bedroom

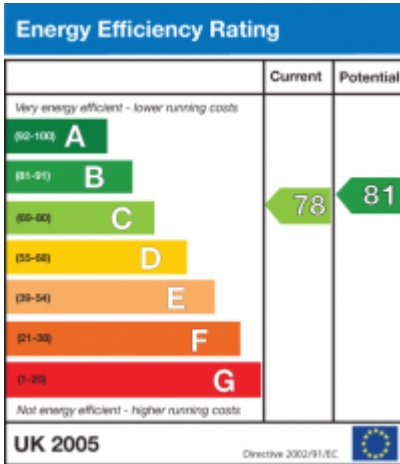
Bathroom

Storage

Storage

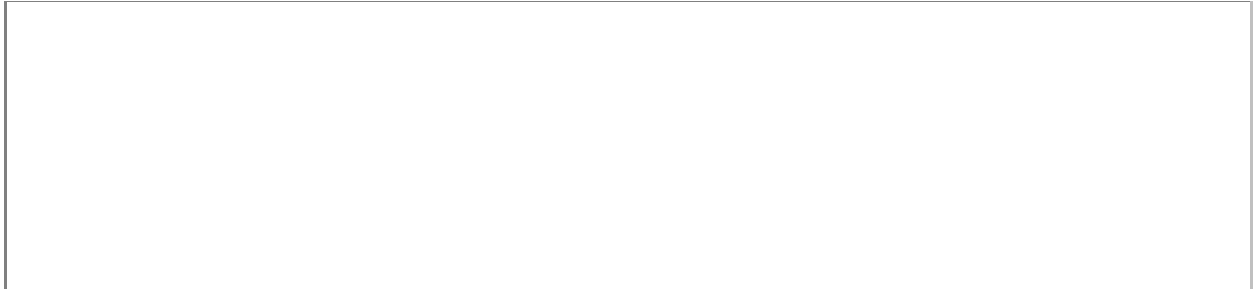


LEATHER LANE FARRINGDON





LEATHER LANE FARRINGDON



CALL 020 7480 0120

REF: 5892765

When you want to view a property through us it helps to bear in mind the following:

Viewings are a limited opportunity and therefore should be undertaken seriously. It might be necessary to take a flexible approach in the time arrangement of viewings. Sometimes a landlord will give us specific times only convenient to them. We do advise landlords that if they are serious about letting property they should be as flexible as possible. We normally keep keys and can therefore access the property pretty much anytime.

To arrange a viewing for this property please contact our City / Docklands Lettings Office quoting 5892765

DISCLAIMER

VIEWING: strictly by appointment through LUDLOWTHOMPSON. ludlowthompson are Agents for themselves and for the landlord.

1. These particulars do not form any part of any offer or contract.
2. Particulars are intended to give a fair description only. ludlowthompson/landlord accept no responsibility for any error they may contain however caused. Any renter must satisfy her/himself by inspection or otherwise as to their correctness.
3. ludlowthompson or employees have no authority to make or give any representation or warranty whatever regarding this property.

PLEASE NOTE BEFORE PROCEEDING

We have been unable to confirm the terms of tenure, we have relied upon information supplied by the landlord. Photographs may depict items which are not included in the let. Consult a solicitor on aspects relating to tenure/property details.