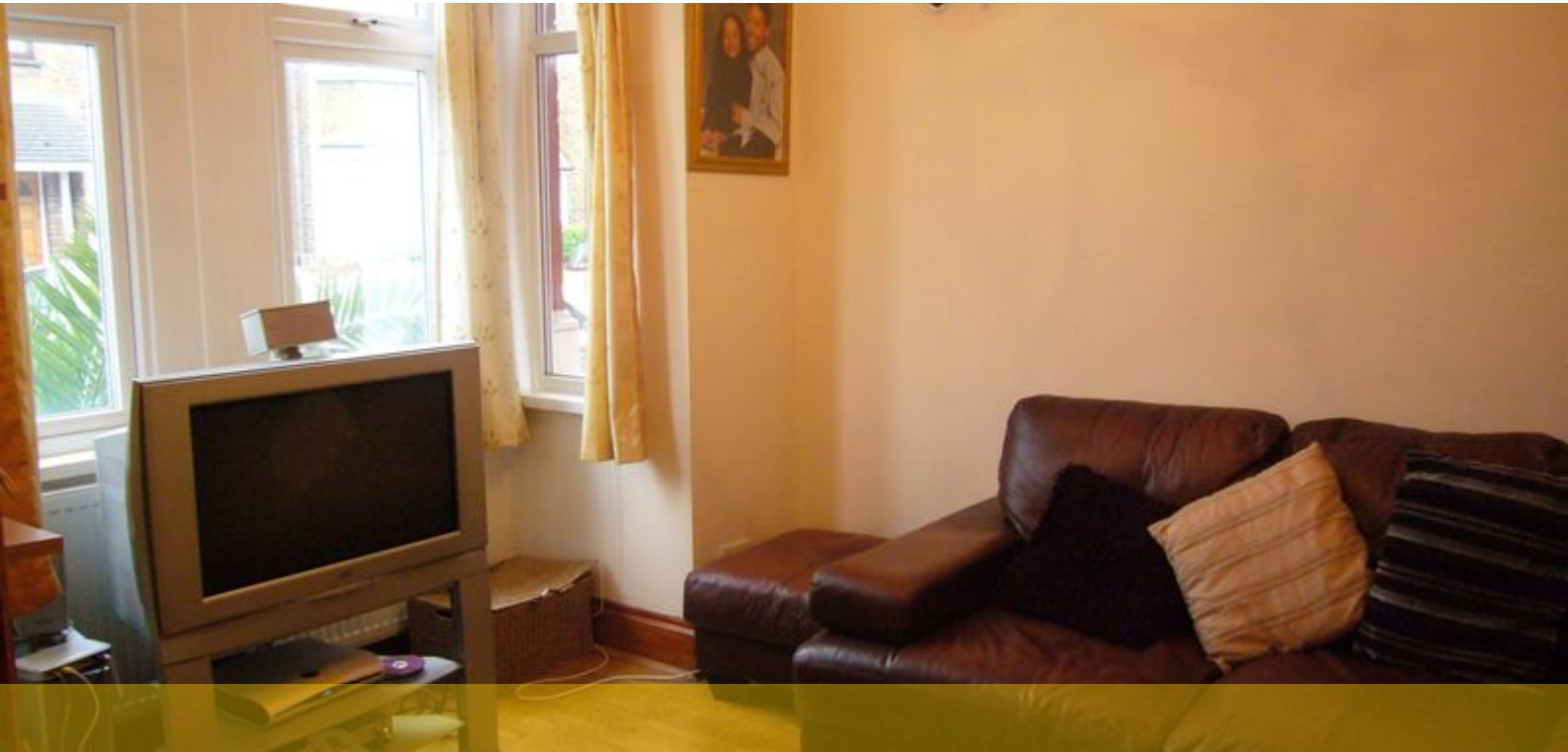




Bow Lettings, 634-636 Mile End Road, Bow, London E3 4PH
E bowlet@ludlowthompson.com W www.ludlowthompson.com

BATEMAN ROAD CHINGFORD



LET

REF: 591217

4 Bed, Terraced House, Private Garden

Modern Ikea Furnisher - Very Modern Decoration - 4 Bedrooms - Fully Furnished - Seperate fitted Kitchen

Stunning 4 bedroom terraced house in the heart of Chingford, with an excellent quality finishing throughout. This accommodations has never been rented before, hence in an exceptional state. The house consists of 3 large double bedrooms and one single, separate kitchen, reception, brand new tiled and modern kitchen, private garden and on street parking. Very modern house this is a must see house to arrange viewings please call 0208 509 6666.

Train/Tube - Highams Park, Chingford



Bow Lettings, 634-636 Mile End Road, Bow, London E3 4PH
E bowlet@ludlowthompson.com W www.ludlowthompson.com

BATEMAN ROAD CHINGFORD



Reception



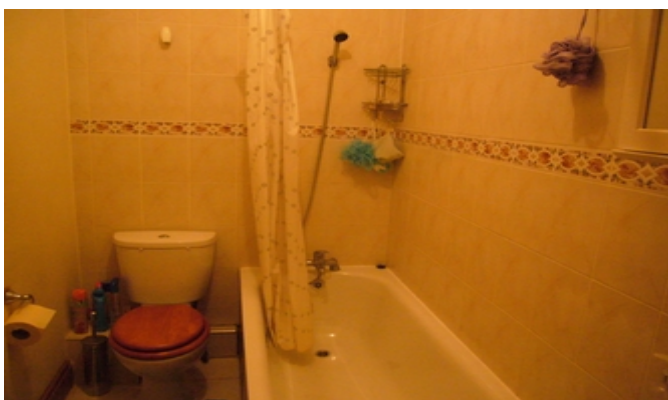
Kitchen



Bedroom



Bedroom



Bathroom



Garden



Bow Lettings, 634-636 Mile End Road, Bow, London E3 4PH
E bowlet@ludlowthompson.com W www.ludlowthompson.com

BATEMAN ROAD CHINGFORD



Reception

Kitchen

Bedroom

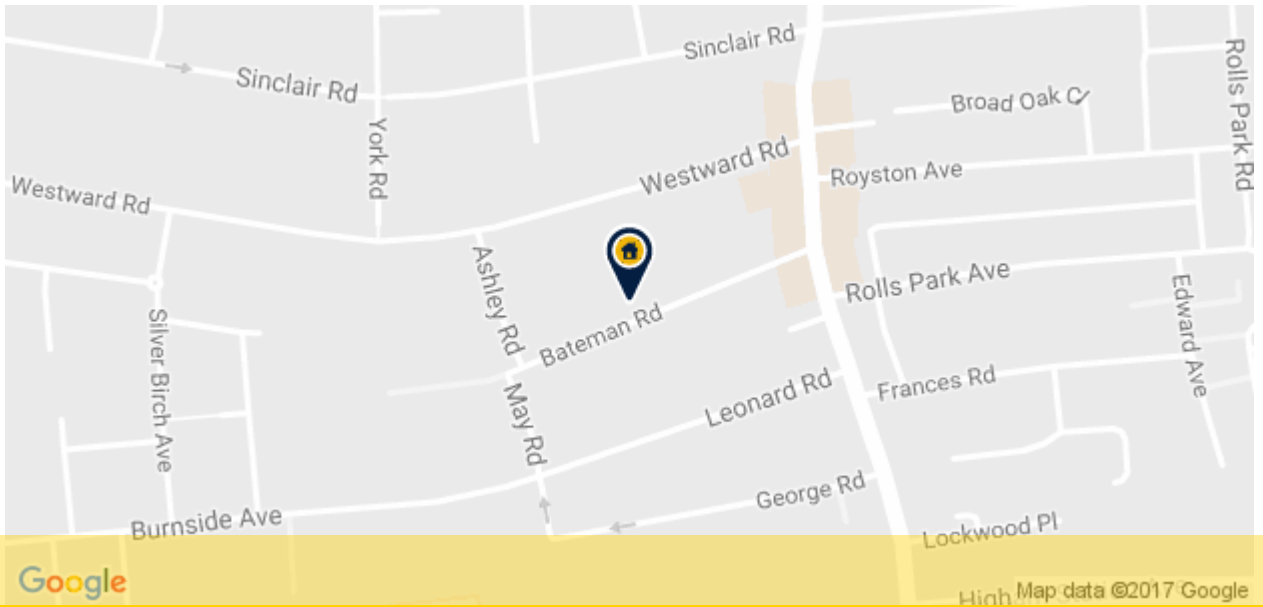
Bedroom

Bathroom

Garden



BATEMAN ROAD CHINGFORD



REF: 591217

When you want to view a property through us it helps to bear in mind the following:

Viewings are a limited opportunity and therefore should be undertaken seriously. It might be necessary to take a flexible approach in the time arrangement of viewings. Sometimes a landlord will give us specific times only convenient to them. We do advise landlords that if they are serious about letting property they should be as flexible as possible. We normally keep keys and can therefore access the property pretty much anytime.

To arrange a viewing for this property please contact our Bow Lettings Office quoting 591217

DISCLAIMER

VIEWING: strictly by appointment through LUDLOWTHOMPSON. ludlowthompson are Agents for themselves and for the landlord.

1. These particulars do not form any part of any offer or contract.
2. Particulars are intended to give a fair description only. ludlowthompson/landlord accept no responsibility for any error they may contain however caused. Any renter must satisfy her/himself by inspection or otherwise as to their correctness.
3. ludlowthompson or employees have no authority to make or give any representation or warranty whatever regarding this property.

PLEASE NOTE BEFORE PROCEEDING

We have been unable to confirm the terms of tenure, we have relied upon information supplied by the landlord. Photographs may depict items which are not included in the let. Consult a solicitor on aspects relating to tenure/property details.