



Docklands Lettings, 3-5 Dock Street, London E1 8JN

T 020 7480 0120 E docklet@ludlowthompson.com W www.ludlowthompson.com

CENDAL CRESCENT SHADWELL



LET

REF: 6132337

Studio, Apartment, Private Balcony & Communal Garden

Private Balcony - Gym - Available now - Brand new Development - Communal Garden - Cinema room

This brand new studio apartment consists of an open-plan living area, high-spec fitted kitchen, private balcony, fitted wardrobes and en-suite bathroom. The residents of the development also have fantastic amenities which include 24 hour concierge, on site gym, cinema room, rooftop gardens and resident's lounge. You have great transport links into the city and Canary Wharf via Whitechapel station which is within 5 minutes walking distance.

Train/Tube - Whitechapel



Docklands Lettings, 3-5 Dock Street, London E1 8JN
T 020 7480 0120 E docklet@ludlowthompson.com W www.ludlowthompson.com

CENDAL CRESCENT SHADWELL



bathroom



bedroom cupboard aspect



bedroom wardrobe



kitchen aspect



kitchen door aspect



Balcony



Docklands Lettings, 3-5 Dock Street, London E1 8JN
T 020 7480 0120 E docklet@ludlowthompson.com W www.ludlowthompson.com

CENDAL CRESCENT SHADWELL



Communal space



Communal Garden



Cinema room aspect



cinema room



gym aspect



gym aspect 2



CENDAL CRESCENT SHADWELL



Communal space



external



Docklands Lettings, 3-5 Dock Street, London E1 8JN

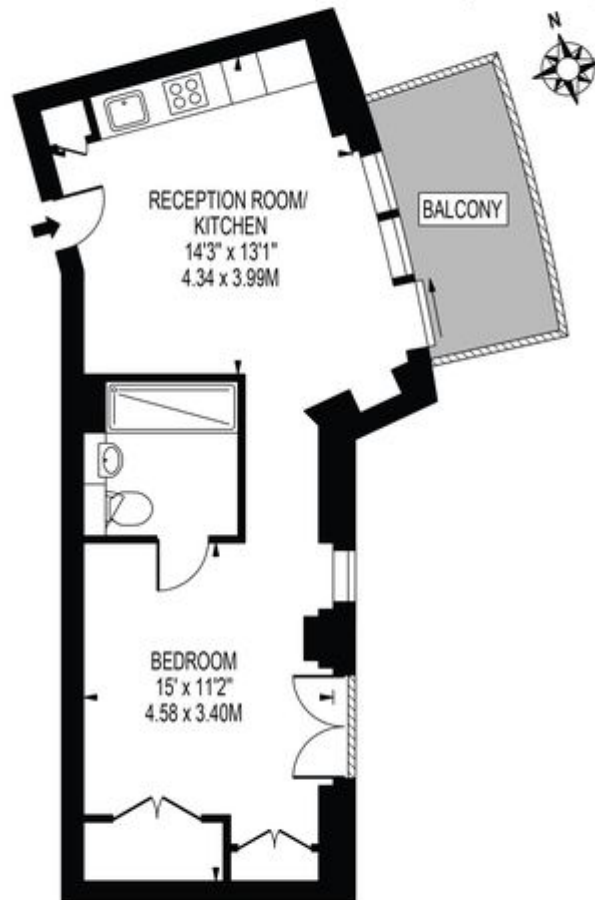
T 020 7480 0120 E docklet@ludlowthompson.com W www.ludlowthompson.com

CENDAL CRESCENT SHADWELL



GEORGETTE APARTMENTS

APPROXIMATE GROSS INTERNAL FLOOR AREA: 431 SQ FT - 40.07 SQ M



FIFTH FLOOR

FOR ILLUSTRATION PURPOSES ONLY

THIS FLOOR PLAN SHOULD BE USED AS A GENERAL OUTLINE FOR GUIDANCE ONLY AND DOES NOT CONSTITUTE IN WHOLE OR IN PART AN OFFER OR CONTRACT. ANY INTENDING PURCHASER OR LESSEE SHOULD SATISFY THEMSELVES BY INSPECTION, SEARCHES, ENQUIRIES AND FULL SURVEY AS TO THE CORRECTNESS OF EACH STATEMENT. ANY AREAS, MEASUREMENTS OR DISTANCES QUOTED ARE APPROXIMATE AND SHOULD NOT BE USED TO VALUE A PROPERTY OR BE THE BASIS OF ANY SALE OR LET.

Please note that this floor plan is produced for illustration and identification purposes only. It is NOT drawn to a scale. Measurements are taken in accordance with the R.I.C.S. Code of Measurement Practice. Areas quoted are Gross Internal Areas as per the R.I.C.S. Code and are not guaranteed. Do not use this plan to buy or place furniture or furnishings. Rely upon your own measurements only. Areas quoted are only a guide.



Docklands Lettings, 3-5 Dock Street, London E1 8JN
T 020 7480 0120 E docket@ludlowthompson.com W www.ludlowthompson.com

CENDAL CRESCENT SHADWELL

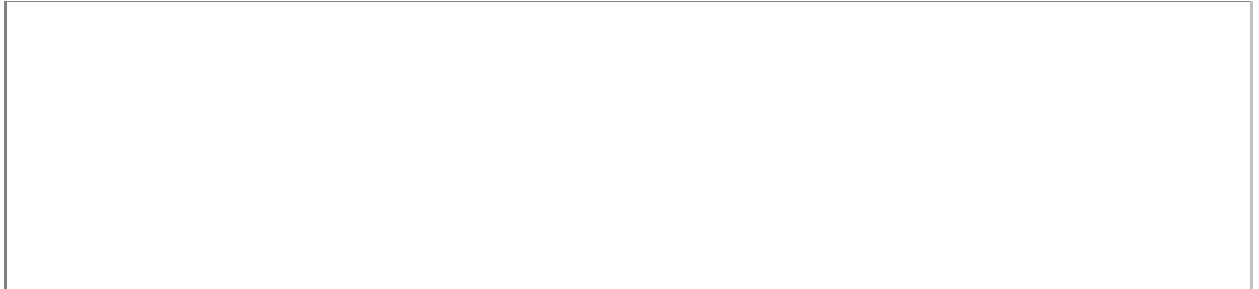




Docklands Lettings, 3-5 Dock Street, London E1 8JN

T 020 7480 0120 E docklet@ludlowthompson.com W www.ludlowthompson.com

CENDAL CRESCENT SHADWELL



CALL 020 7480 0120

REF: 6132337

When you want to view a property through us it helps to bear in mind the following:

Viewings are a limited opportunity and therefore should be undertaken seriously. It might be necessary to take a flexible approach in the time arrangement of viewings. Sometimes a landlord will give us specific times only convenient to them. We do advise landlords that if they are serious about letting property they should be as flexible as possible. We normally keep keys and can therefore access the property pretty much anytime.

To arrange a viewing for this property please contact our Docklands Lettings Office quoting 6132337

DISCLAIMER

VIEWING: strictly by appointment through LUDLOWTHOMPSON. ludlowthompson are Agents for themselves and for the landlord.

1. These particulars do not form any part of any offer or contract.
2. Particulars are intended to give a fair description only. ludlowthompson/landlord accept no responsibility for any error they may contain however caused. Any renter must satisfy her/himself by inspection or otherwise as to their correctness.
3. ludlowthompson or employees have no authority to make or give any representation or warranty whatever regarding this property.

PLEASE NOTE BEFORE PROCEEDING

We have been unable to confirm the terms of tenure, we have relied upon information supplied by the landlord. Photographs may depict items which are not included in the let. Consult a solicitor on aspects relating to tenure/property details.