



Finsbury Park Lettings, 8 Blackstock Road, London N4 2DL

T 020 7704 5777 E finsburylet@ludlowthompson.com W www.ludlowthompson.com

FELIX ROAD WEST EALING



LET

REF: 903223

3 Bed, Terraced House, Private Garden

Terrace House - Close to West Ealing Station - Set Over Three Floors - Three Bedrooms - First Floor Bathroom - Own Garden

Located just a short walk from West Ealing Station is this three bedroom terrace house, The property is arranged over three floors and benefits from a through lounge, first floor bathroom, three double bedrooms, gas central heating (untested). This property does require some modernisation and would ideally suit someone looking for a project or an investment. Call now to arrange a viewing as this property will certainly not be on the market long.

Train/Tube - Drayton Green, Hanwell, Castle Bar Park, West Ealing

ludlowthompson



Finsbury Park Lettings, 8 Blackstock Road, London N4 2DL
T 020 7704 5777 E finsburylet@ludlowthompson.com W www.ludlowthompson.com

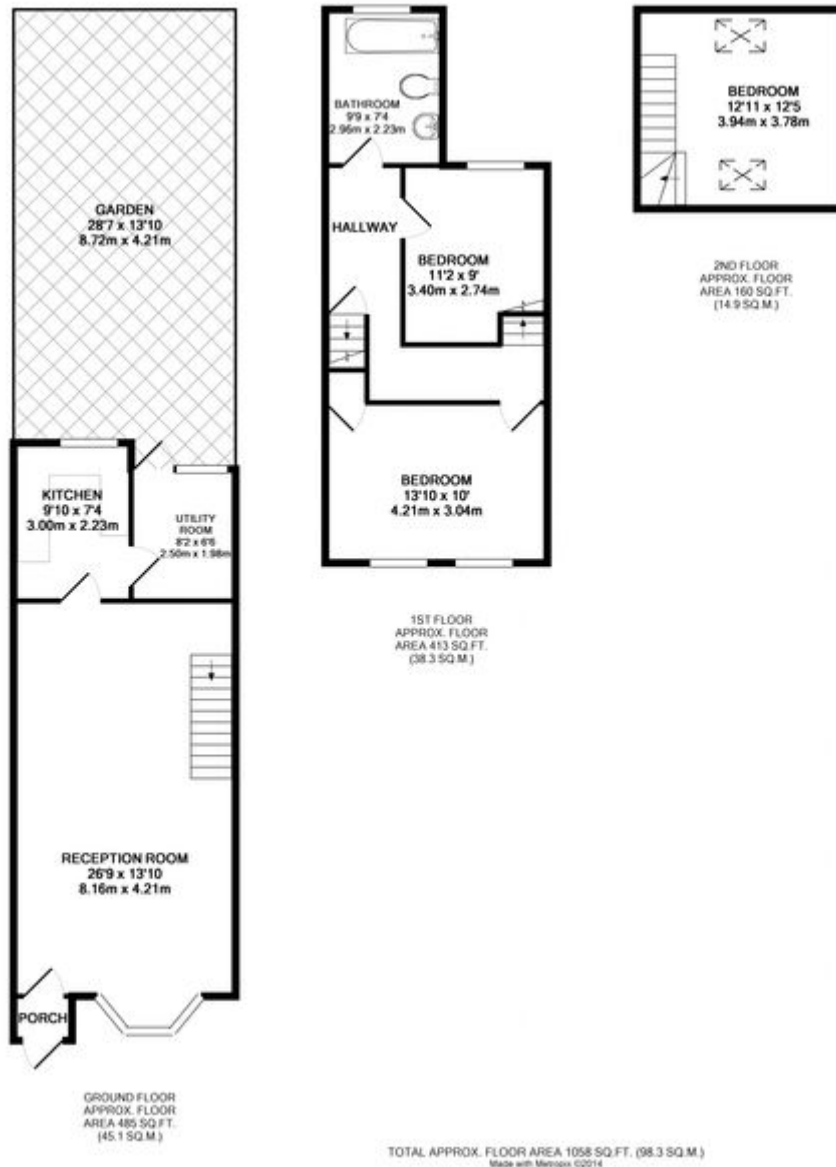
FELIX ROAD WEST EALING



External



FELIX ROAD WEST EALING



Please note that this floor plan is produced for illustration and identification purposes only. It is NOT drawn to a scale. Measurements are taken in accordance with the R.I.C.S. Code of Measurement Practice. Areas quoted are Gross Internal Areas as per the R.I.C.S. Code and are not guaranteed. Do not use this plan to buy or place furniture or furnishings. Rely upon your own measurements only. Areas quoted are only a guide.



Finsbury Park Lettings, 8 Blackstock Road, London N4 2DL
T 020 7704 5777 E finsburylet@ludlowthompson.com W www.ludlowthompson.com

FELIX ROAD WEST EALING





Finsbury Park Lettings, 8 Blackstock Road, London N4 2DL

T 020 7704 5777 E finsburylet@ludlowthompson.com W www.ludlowthompson.com

FELIX ROAD WEST EALING



CALL 020 7704 5777

REF: 903223

When you want to view a property through us it helps to bear in mind the following:

Viewings are a limited opportunity and therefore should be undertaken seriously. It might be necessary to take a flexible approach in the time arrangement of viewings. Sometimes a landlord will give us specific times only convenient to them. We do advise landlords that if they are serious about letting property they should be as flexible as possible. We normally keep keys and can therefore access the property pretty much anytime.

To arrange a viewing for this property please contact our Finsbury Park Lettings Office quoting 903223

DISCLAIMER

VIEWING: strictly by appointment through LUDLOWTHOMPSON. ludlowthompson are Agents for themselves and for the landlord.

1. These particulars do not form any part of any offer or contract.
2. Particulars are intended to give a fair description only. ludlowthompson/landlord accept no responsibility for any error they may contain however caused. Any renter must satisfy her/himself by inspection or otherwise as to their correctness.
3. ludlowthompson or employees have no authority to make or give any representation or warranty whatever regarding this property.

PLEASE NOTE BEFORE PROCEEDING

We have been unable to confirm the terms of tenure, we have relied upon information supplied by the landlord. Photographs may depict items which are not included in the let. Consult a solicitor on aspects relating to tenure/property details.